

NM Series

NE Series

MCCB & ELCB



NOVO
Electric technology UK Ltd



NM & NE FOR PROTECTION

Our circuit breakers are designed to protect low voltage electrical systems from damage caused by overload and short circuit as well as the earth leakage.

FOR POWER DISTRIBUTION

High breaking capacity
Optimum coordination technique
Powerful engineering tools

FOR PROTECTION OF MOTORS AND THEIR CONTROL DEVICES

Optimal overload protection
Guaranteed Short Circuit Current Ratings

FOR DISCONNECTING & CONTROLLING CIRCUITS

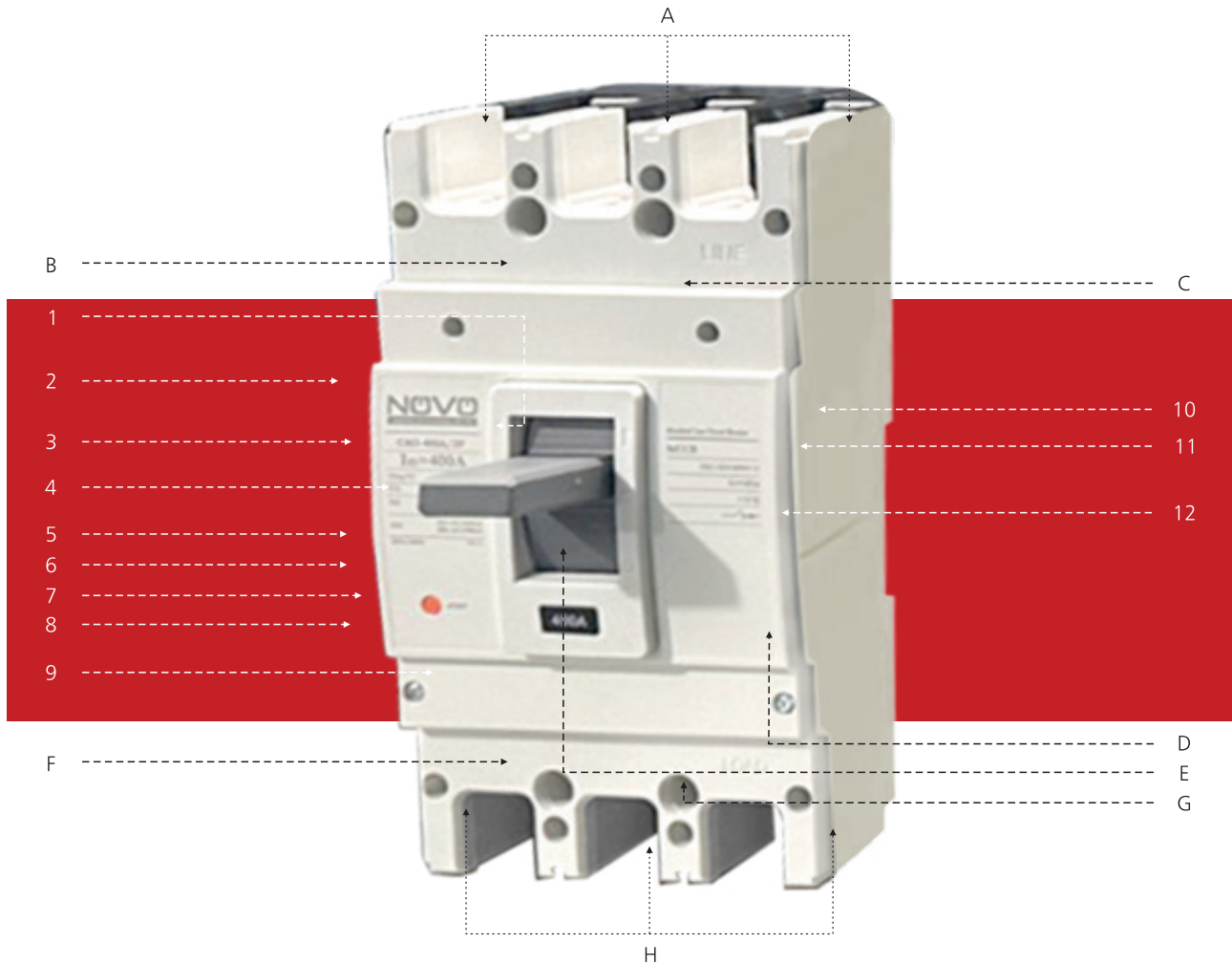
FOR EXTENSIVE APPLICATIONS

Wide range of optimized accessories





MARKING & CONFIGURATION



Printing instruction

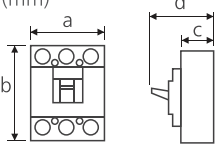
1	Ue: Rated operational voltage
2	Company logo
3	Rated frequency
4	In: Rated current
5	Uimp: Rated impulse withstand voltage
6	Instantaneous/short circuit trip current
7	IEC/EN standard
8	Calibrated temperature as defined by IEC/EN 60947-2
9	Company name
10	Product code
11	Icu: Ultimate breaking capacity
12	Ics: Service breaking capacity

Function instruction

A	Up-stream cable connections
B	Fixing hole
C	Fixing hole
D	"Push to trip" button for over current trip
E	Operating handle
F	Fixing hole
G	Fixing hole
H	Down-stream cable connections



TECHNICAL DATA SHEET

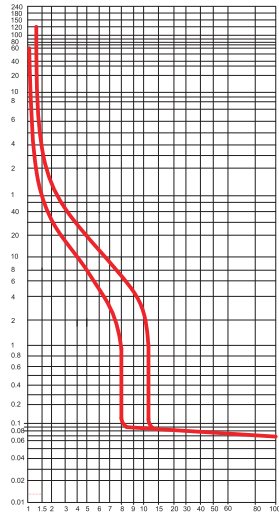
Ampere frame size		50AF								100AF			
Product type		NM2-50/2				NM2-50/3				NM2-100/2		NM2-100/3	
Number of poles		2				3				2		3	
Rated frequency (Hz)		50/60				50/60				50/60		50/60	
Rated current (A)	In	5, 10		15, 20, 30, 40, 50		5, 10		15, 20, 30, 40, 50		63, 80, 100		63, 80, 100	
Rated voltage (V)	Ue	220/415				220/415				220/415		220/415	
Rated Insulated voltage (V)	Ui	500				500				500		500	
Rated impulse voltage (kV)	Uimp	6				6				6		6	
Ultimate breaking capability (kA) GB 14048.2, IEC/EN 60947-2	Icu	220V	415V	220V	415V	220V	415V	220V	415V	220V		415V	
		5	2.5	10	6	5	2.5	10	6	10		6	
Ics=%×Icu		75%		75%		75%		75%		75%		75%	
Dimensions (mm) 	a	50				75				50		75	
	b	98				98				98		98	
	c	60				60				60		60	
	d	80				80				80		80	
Weight (kg)		0.31				0.41				0.31		0.41	



CHARACTERISTICS CURVES

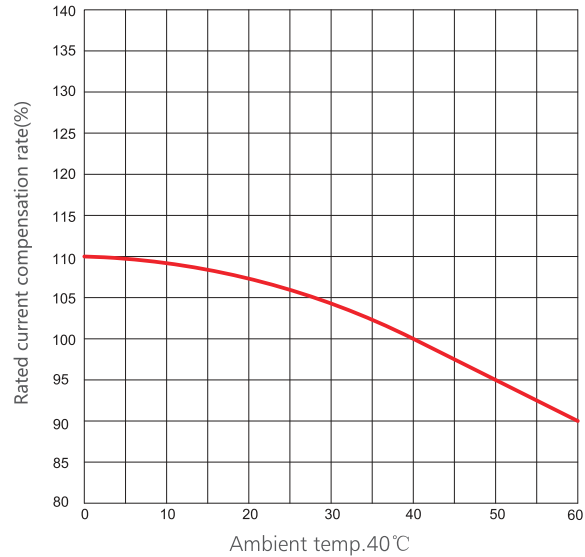
NM2-50

Rated Current(5A-50A)



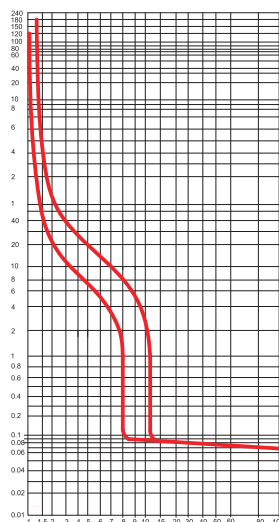
Rated current times

Temperature compensation curves



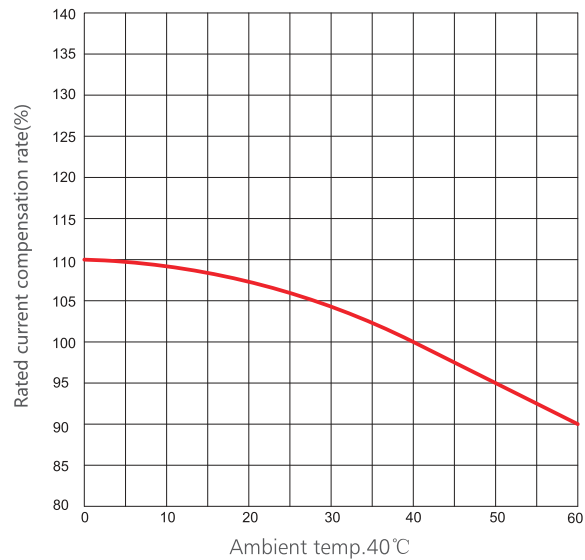
NM2-100

Rated Current(63A-100A)



Rated current times

Temperature compensation curves





CHARACTERISTICS CURVES TABLE

Test No.	Load current	Rated current	Initial state	Time	Estimated result
Over-load					
1.	1.05 I _n	I _n ≤ 63A	cold state	t < 1h	Non-trip
		I _n > 63A		t < 2h	
2.	1.30 I _n	I _n ≤ 63A	continuing the test	t < 1h	Trip

Short circuit

3.	10 I _n *80%	All ampere	cold state	t < 0.2s	Non-trip
	10 I _n *120%			t < 0.2s	Trip

TEMPERATURE COMPENSATION TABLE

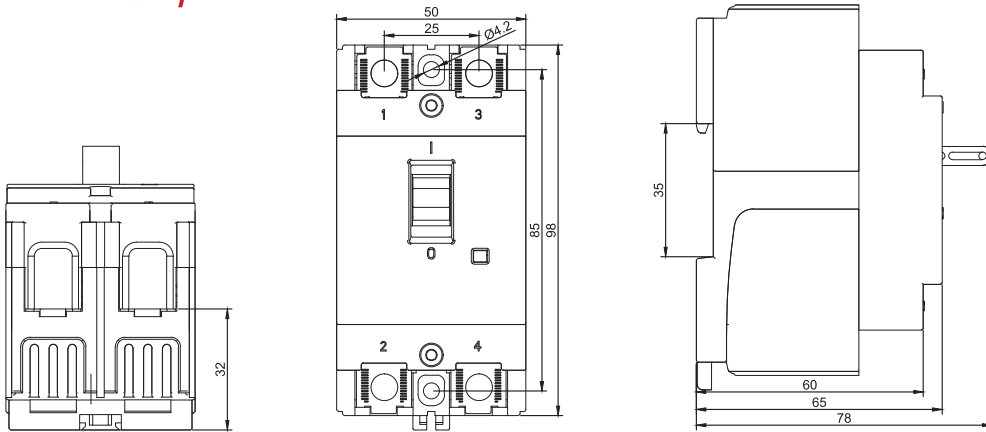
(IEC/EN 60947-2) (Calibration at 40°C)

Product code	Rated current range	Compensation coefficient						
		0°C	10°C	20°C	30°C	40°C	50°C	60°C
NM2-50	5A~50A	110%	109%	107%	104%	100%	95%	90%
NM2-100	63A~100A	110%	109%	107%	104%	100%	95%	90%



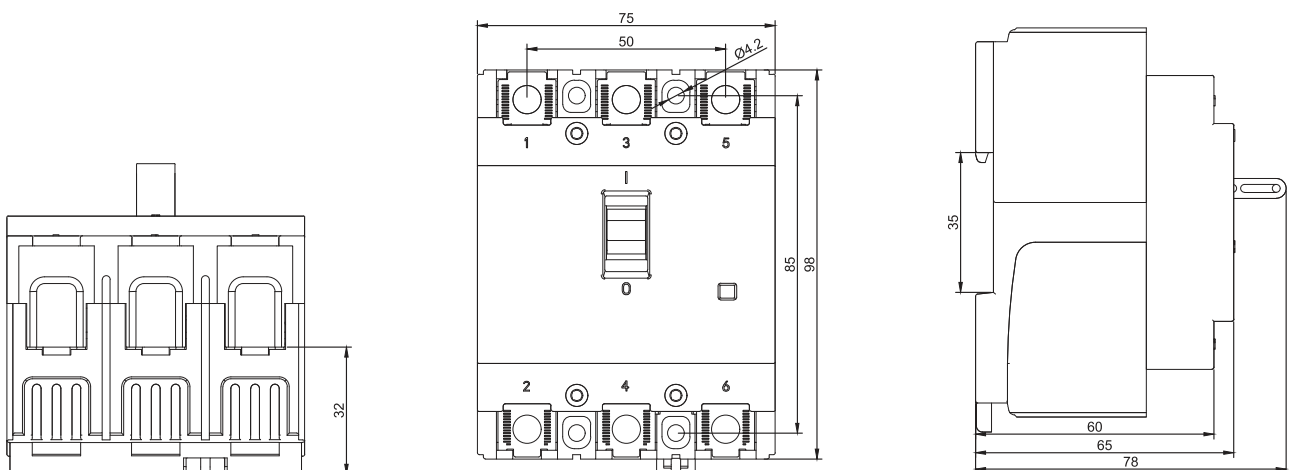
OUTLINE DIMENSION

NM2-50/2P



2P

NM2-50/3P

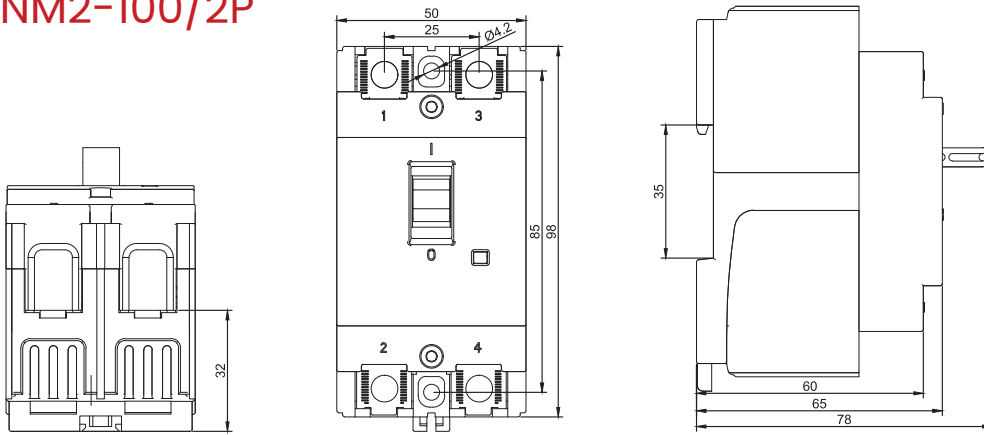


3P



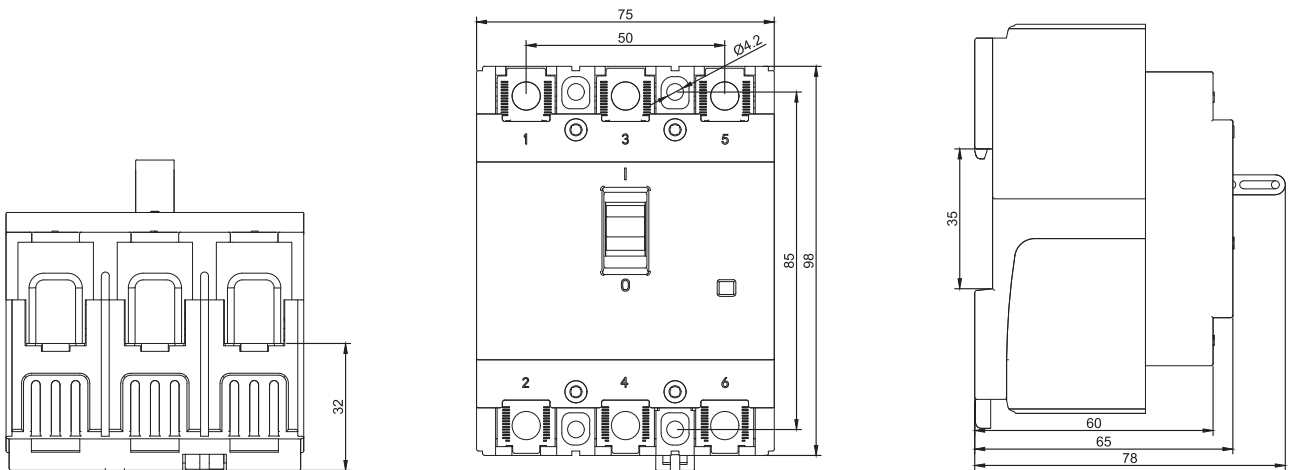
OUTLINE DIMENSION

NM2-100/2P



2P

NM2-100/3P



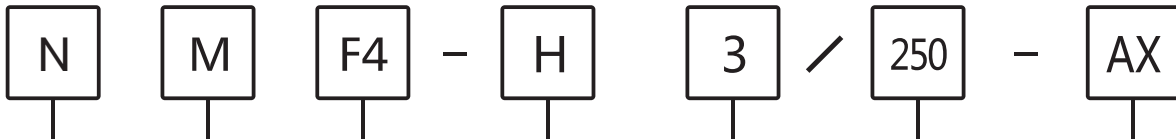
3P



TYPE GUIDE

CLASSIFICATION

According to the Pole : 1-pole, 2-poles, 3-poles, 4-poles
 According to the Breaking Capacity : S-type, H-type
 According to the rated current : Fix type, Adjustable type(0.8In~1.0In)



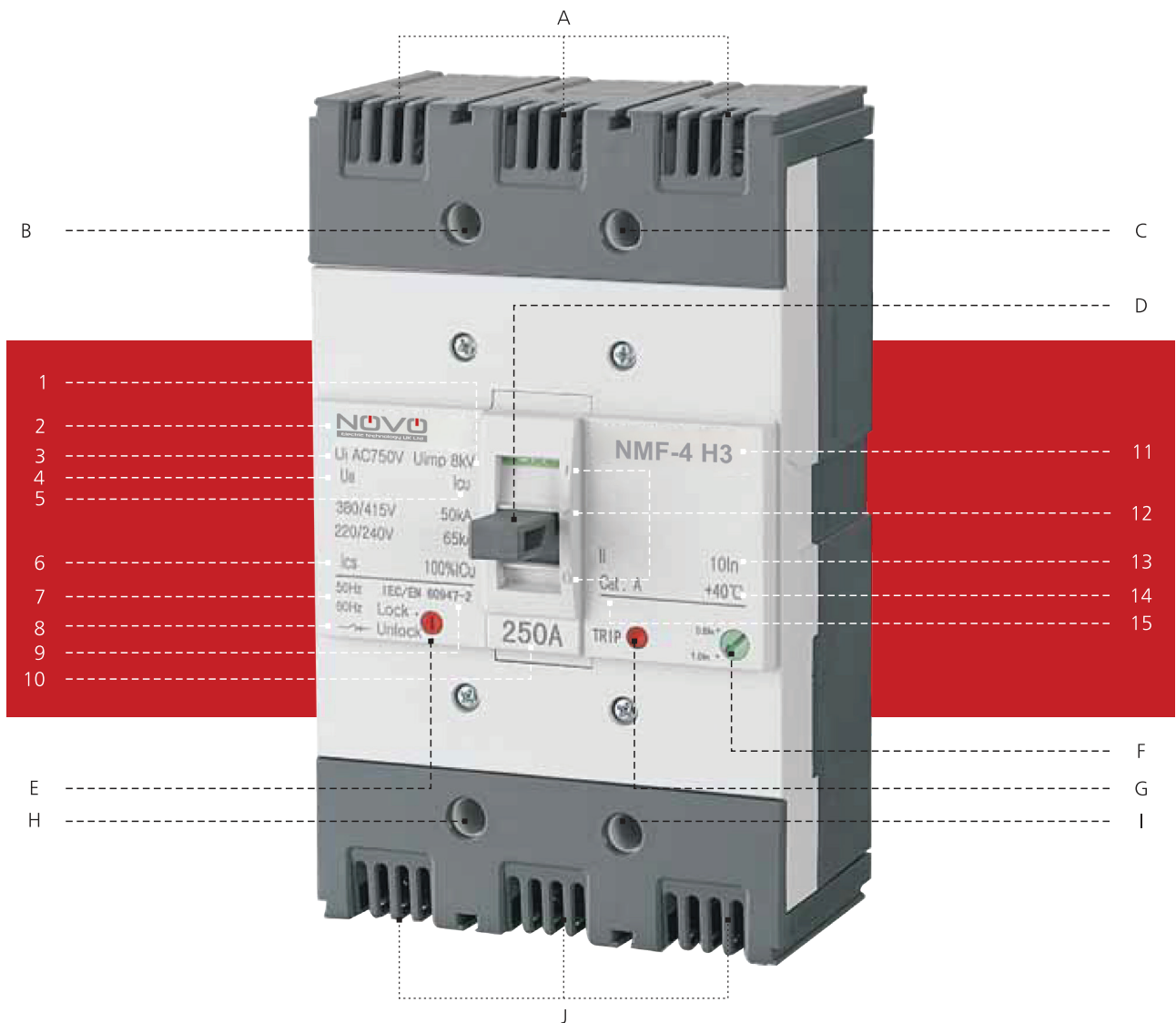
NOVO electric	MCCB Series	Ampere frame	Breaking capacity level	Number of the poles	Rated current	Built-in Accessories
		F1 63A	S Standard capacity type	1 - One pole	15A~63A F1	AX Auxiliary switch
		F2 125A		2 - Two Poles	15A~125A F2	AL Alarm switch
		F3 160A	H High capacity type	3 - Three Poles	15A~160A F3	SHT Shunt trip
		F4 250A		4 - Four poles	100A~250A F4	AX+AX Auxiliary switch Auxiliary switch
		F5 400A			250A~400A F5	
		F6 800A			500A~800A F6	AX+AL Auxiliary switch Alarm switch

Remark:
 For the rated current ,it has fix type and adjustable type .
 The default type is adjustable type(0.8In~1.0In) .
 If need fix type or have other special requirement ,please advise in advance .

Built-out Accessories	
IB	Inter-phase Insulation Barrier
STC	Short Terminal Cover
CCB	Copper Connection Bar



MARKING & CONFIGURATION





Printing instruction

Function instruction

1	Uimp: Rated impulse withstand voltage	A	Up-stream cable connections
2	Company logo	B	Fixing hole
3	Ui: Rated insulation voltage	C	Fixing hole
4	Ue: Rated operational voltage	D	Operating handle
5	Icu: Ultimate breaking capacity	E	Lock setting for the operating handle
6	Ics: Service breaking capacity	F	Long time current setting
7	Rated frequency	G	"Push to trip" button for over current trip
8	Symbol indicating suitability for Isolation as defined by IEC/EN 60947-2	H	Fixing hole
9	IEC/EN standard	I	Fixing hole
10	In: Rated current	J	Down-stream cable connections
11	Product code		
12	Indication of closed (I/ON) position Indication of free trip position Indication of open (O/OFF) position		
13	Instantaneous/short circuit trip current		
14	Calibrated temperature as defined by IEC/EN 60947-2		
15	Utilization category		



Technical Data Table

Ampere frame size		NMF1 (63A)			
Breaking capacity code		S		H	
Product code and pole		2P	3P	2P	3P
		NMF1-S2	NMF1-S3	NMF1-H2	NMF1-H3
Rated current ,In (A)		15.20.30.40.50.63			
Adjustable part	Rated current setting(0.8In~1.0In)①	√	√	√	√
	Lockup device for operating handle②	√	√	√	√
Rated operational voltage ,Ue (V) , AC		240/415			
Rated insulation voltage ,Ui (V)		1000			
Rated impulse withstand voltage ,Uimp (kV)		8			
Standard		Conformity with IEC / EN 60947-2			
Rated frequency (Hz)		50/60			
Rated short-circuit breaking capacity ,Icu (kA)					
AC	240V	14		25	
	415V	5		7.5	
Ics=% x Icu		100%			
Mechanical life (circle)		8500			
Electrical life (circle)		1500			
Dimension Length*Width*Height (mm)		1-pole	-		
		2-poles	100*50*60		
		3-poles	100*75*60		
		4-poles	-		



Technical Data Table

NMF2 (125A)								NMF3 (160A)			
S				H				S		H	
1P	2P	3P	4P	1P	2P	3P	4P	3P	4P	3P	4P
NMF2-S1	NMF2-S2	NMF2-S3	NMF2-S4	NMF2-H1	NMF2-H2	NMF2-H3	NMF2-H4	NMF3-S3	NMF3-S4	NMF3-H3	NMF3-H4
15.20.30.40.50.60.75.80.100.125								15.20.30.40.50.60.80.100.125.140.160			
×	√	√	√	×	√	√	√	√	√	√	√
×	√	√	√	×	√	√	√	√	√	√	√
240/415								240/415			
1000								1000			
8								8			
Conformity with IEC / EN 60947-2								Conformity with IEC / EN 60947-2			
50/60								50/60			
18	35			25	50			50		65	
-	18			-	35			25		37	
50%	100%			50%	100%			100%			
8500				8500				7000			
1500				1500				1000			
130*25*60								-			
130*50*60								-			
130*75*60								155*90*60			
130*100*60								155*120*60			



Technical Data Table



Ampere frame size		NMF4 (250A)					
Breaking capacity code		S			H		
Product code and pole		1P	3P	4P	1P	3P	4P
		NMF4-S1	NMF4-S3	NMF4-S4	NMF4-H1	NMF4-H3	NMF4-H4
Rated current ,In (A)		100.125.160.180.200.225.250					
Adjustable part	Rated current setting(0.8In~1.0In)①	×	√	√	×	√	√
	Lockup device for operating handle②	×	√	√	×	√	√
Rated operational voltage ,Ue (V) ,AC		240/415					
Rated insulation voltage ,Ui (V)		1000					
Rated impulse withstand voltage ,Uimp (kV)		8					
Standard		Conformity with IEC / EN 60947-2					
Rated frequency (Hz)		50/60					
Rated short-circuit breaking capacity ,Icu (kA)							
AC	240V	25	50	36	65		
	415V	-	37	-	50		
Ics=% x Icu		50%	100%	50%	100%		
Mechanical life (circle)		7000			7000		
Electrical life (circle)		1000			1000		
Dimension Length*Width*Height (mm)		1-pole	150*38*60				
		2-poles	-				
		3-poles	165*105*60				
		4-poles	165*140*60				



Technical Data Table



NMF5 (400A)				NMF6 (800A)			
S		H		S		H	
3P	4P	3P	4P	3P	4P	3P	4P
NMF5-S3	NMF5-S4	NMF5-H3	NMF5-H4	NMF6-S3	NMF6-S4	NMF6-H3	NMF6-H4
250.315.350.400 ③				500.630.700.800			
x	x	x	x	x	x	x	x
x	x	x	x	x	x	x	x
240/415				240/415			
1000				1000			
8				8			
Conformity with IEC / EN 60947-2				Conformity with IEC / EN 60947-2			
50/60				50/60			
50		65		65		85	
37		50		50		65	
100%				100%			
4000				2500			
1000				500			
-				-			
-				-			
257*140*103				275*210*103			
257*184*103				275*280*103			

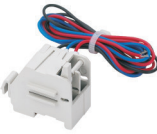


Built-In Accessories



Shunt trip (SHT)

- The shunt trip is an accessory for remote control.
- The shunt will trip when the input voltage is 70% - 110% of the rated operational voltage.(US)



Auxiliary switch (AX)

- Auxiliary switch is used to indicate the "On" and "Off" status of the breaker.
- Each switch has two contacts with a common connection.
- One is open and the other closed when the circuit breaker is open, and viceversa.



Alarm switch (AL)

- Alarm switch will make immediate audio or visual indication in a tripped breaker due to overload, short circuit or shunt trip to remind people.
- This switch features a closed contact when the circuit breaker is tripped automatically.
- In other words, this switch does not function when the breaker is operated manually.



Combination switch (AX+AX)

It has two auxiliary switch(AX) in a body to connect into the same position of the breaker.



Combination switch (AX+AL)

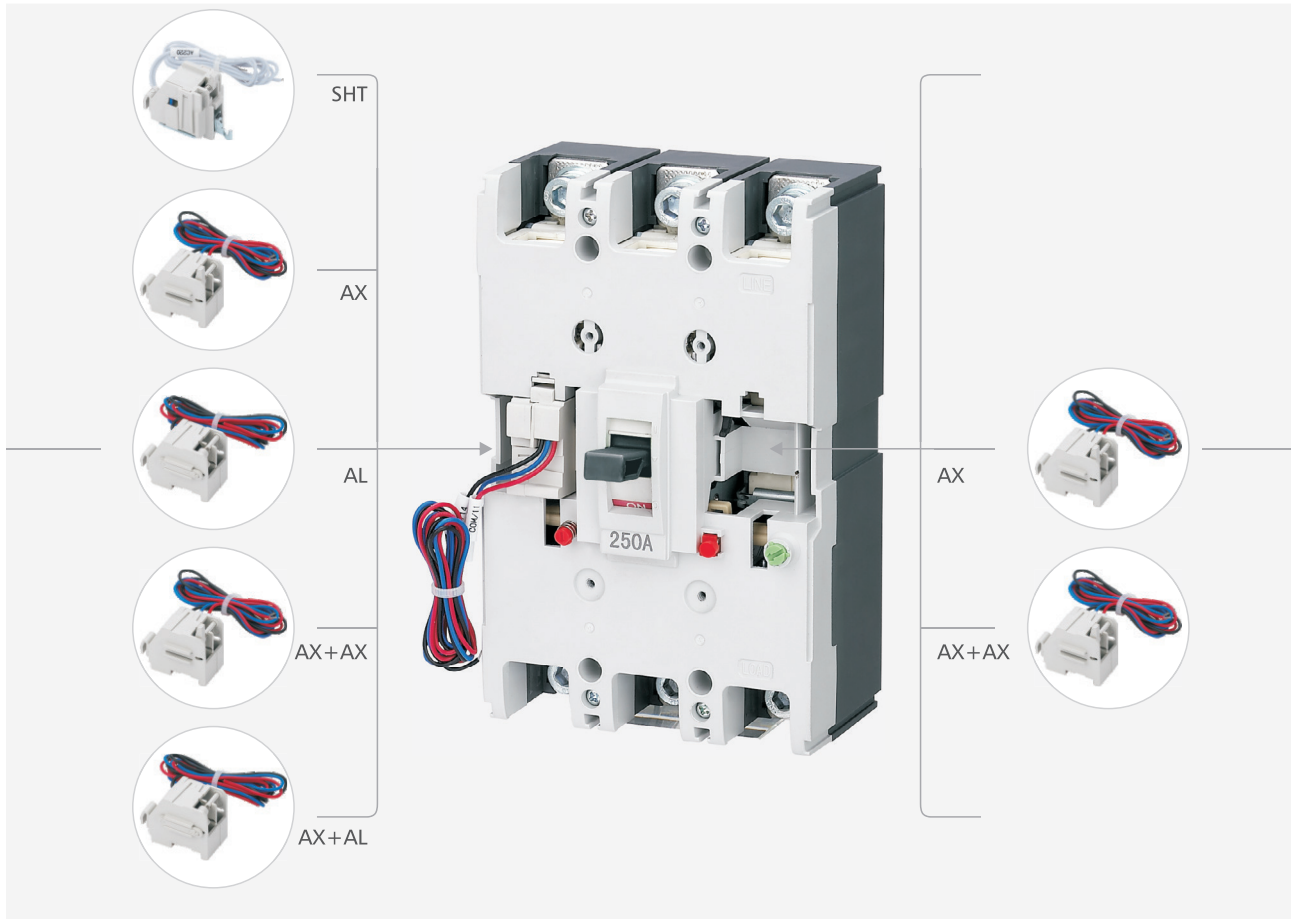
It has one auxiliary switch(AX) and one alarm switch(AL) in a body to connect into the same position of the breaker.

CONTACT(AX+AL)

MCCB	ON	OFF	TRIP
AX			
AL			



Built-In Accessories



Maximum Possibilities

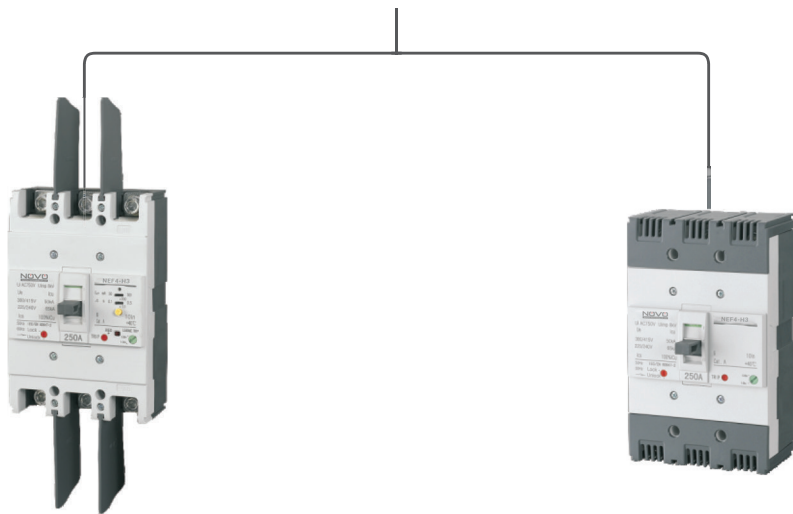
Product code	Poles	Left hole position					Right hole position				
		AX	AL	SHT	AX+AX	AX+AL	AX	AL	SHT	AX+AX	AX+AL
NMF1(63A)	2P	-	-	-	-	-	√	-	-	√	-
	3P	√	√	√	√	√	√	-	-	√	-
	4P	-	-	-	-	-	-	-	-	-	-
NMF2(125A)	1P	-	-	-	-	-	-	-	-	-	-
	2P	-	-	-	-	-	√	-	-	√	-
	3P	√	√	√	√	√	√	-	-	√	-
NMF3(160A)	4P	√	√	√	√	√	√	-	-	√	-
	3P	-	-	-	-	-	-	-	-	-	-
NMF4(250A)	4P	-	-	-	-	-	-	-	-	-	-
	3P	√	√	√	√	√	√	-	-	√	-
NMF5(400A)	4P	√	√	√	√	√	√	-	-	√	-
	3P	-	-	-	-	-	-	-	-	-	-
NMF6(800A)	4P	-	-	-	-	-	-	-	-	-	-
	3P	-	-	-	-	-	-	-	-	-	-



Built-Out Accessories



Inter-phase Insulation Barrier + Short Terminal Cover



Inter-phase Insulation Barrier

Short Terminal Cover



Built-Out Accessories



Inter-phase Insulation Barrier(IB)

- Inter-phase insulation barrier is safety accessory, which is used for the insulation between the phases. It can guarantee the best insulation of the wiring terminal.
- They are compatible with both the short terminal covers. And it is ok to mount the inter-phase insulation barrier in both SM & SE series and every phase(2P,3P and 4P).



Short Terminal Cover(STC)

- Short terminal cover is insulation accessory, which is used to prevent the direct contact between the terminal in circuit breaker and other live parts to ensure the safety of the users.
- All the terminal cover is designed with holes which can be knocked off to connect the cables of various wires and the copper platens.
- They are compatible with both the interphase insulation barrier and suitable for same phase & ampere frame of both NM & NE series(Such as NEF1-2P and NMF1 -2P).



Copper Connection Bar(CCB)

- Copper connection bar is connection accessories, which is used to connect wire/cable or any other conductor together with NM & NE series.
- They are suitable for same phase and same ampere frame of both NM & NE series(Such as SEF1 -2P AND SMF1 -2P).

Maximum Possibilities

Frame	Poles	Short terminal cover(STC)		Inter-phase insulation barrier(IB)		Copper Connection Bar(CCB)	
		Product code	Each product requird quantity	Product code	Each product requird quantity	Product code	Each product requird quantity
NMF1 (63A)	2P	STC 12	2	IB 01	2	-	-
	3P	STC 13	2	IB 01	4	-	-
NMF2 (125A)	1P	STC 21	2	-	-	CCB 01	2
	2P	STC 22	2	IB 01	2	CCB 01	4
	3P	STC 23	2	IB 01	4	CCB 01	6
	4P	STC 24	2	IB 01	6	CCB 01	8
NMF3 (160A)	3P	-	-	-	-	-	-
	4P	-	-	-	-	-	-
NMF4 (250A)	1P	-	-	-	-	CCB 02	2
	3P	STC43	2	IB 02	4	CCB 02	6
	4P	STC44	2	IB 02	6	CCB 02	8
NMF5 (400A)	3P	-	-	IB 03	4	CCB 03	6
	4P	-	-	IB 03	6	CCB 03	8
NMF6 (800A)	3P	-	-	IB 04	4	CCB 04	6
	4P	-	-	IB 04	6	CCB 04	8

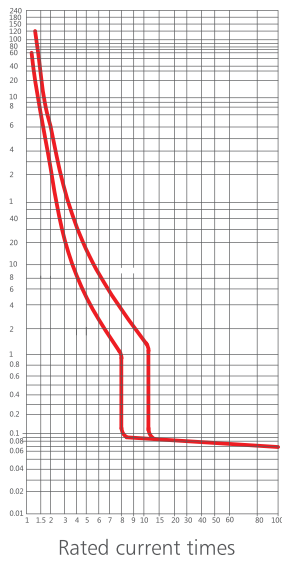
Remark:For the product code of short terminal cover(STC),STC12 means frame.1 two poles MCCB/ELCB.



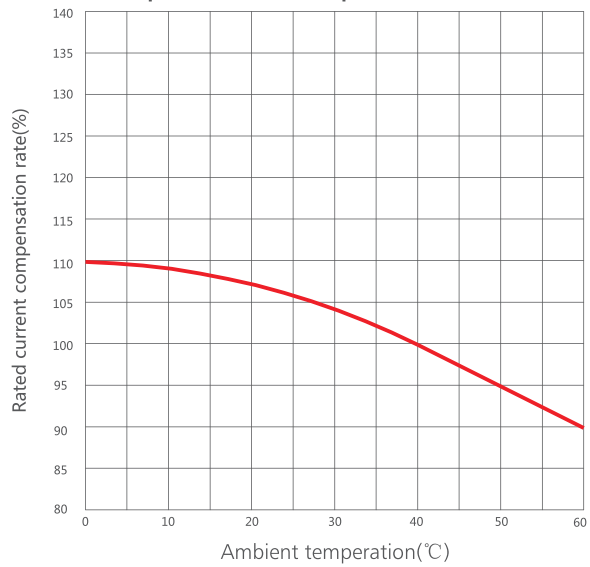
Characteristics curves

NMF1

Rated Current(15A-63A)

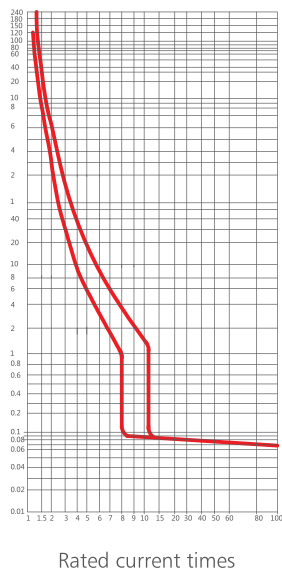


Temperature compensation curves

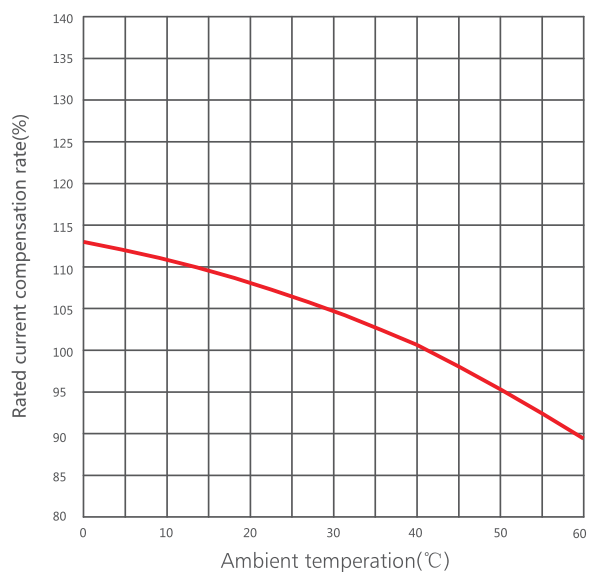


NMF2

Rated Current(15A-125A)



Temperature compensation curves

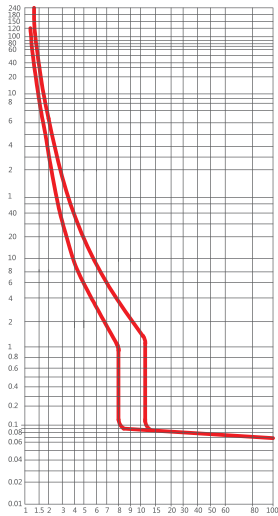




Characteristics curves

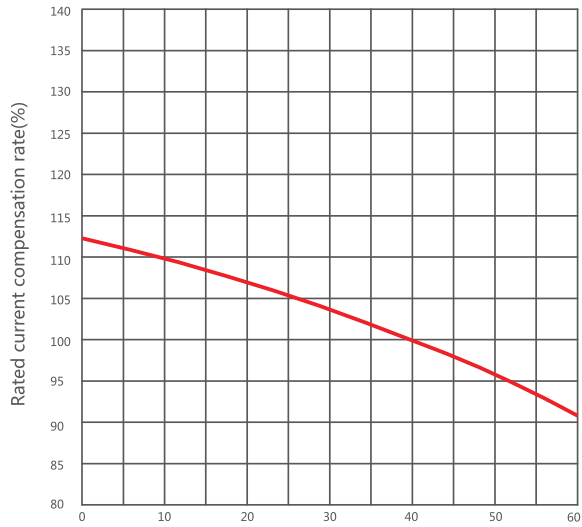
NMF3

Rated Current(15A-160A)



Rated current times

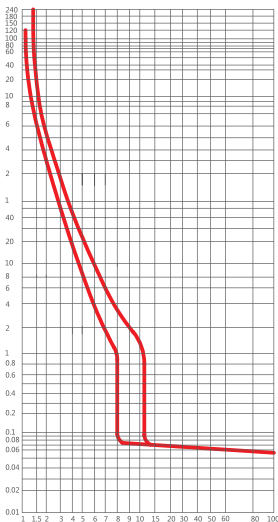
Temperature compensation curves



Ambient temperature(°C)

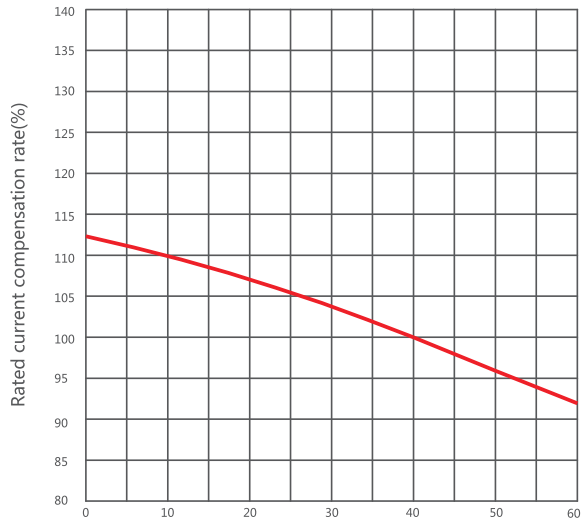
NMF4

Rated Current(100A-250A)



Rated current times

Temperature compensation curves



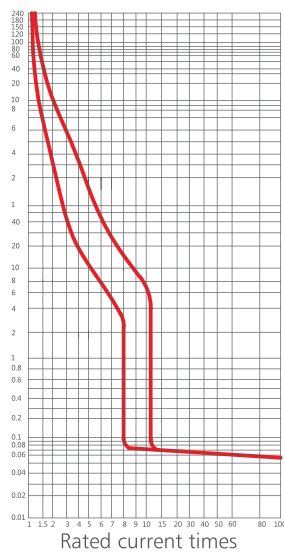
Ambient temperature(°C)



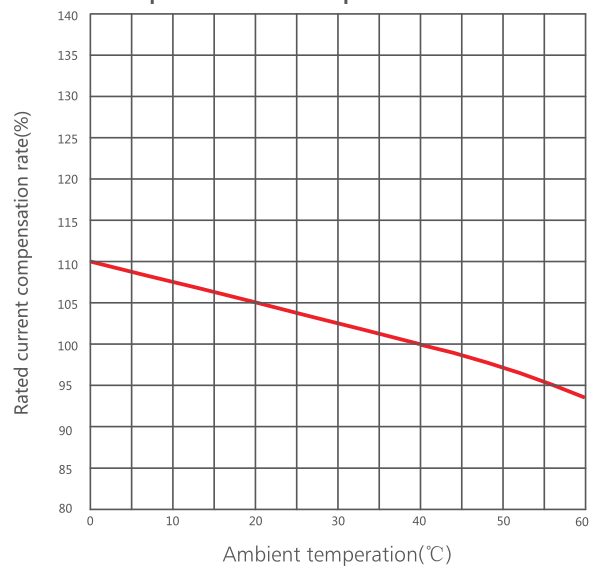
Characteristics curves

NMF5

Rated Current(250A-400A)

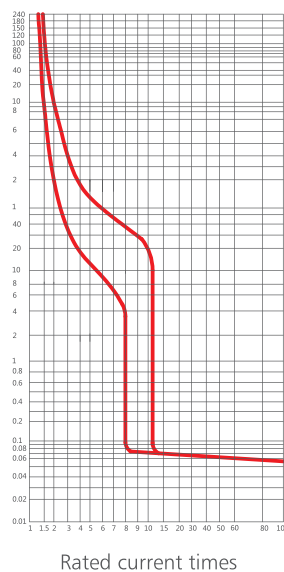


Temperature compensation curves

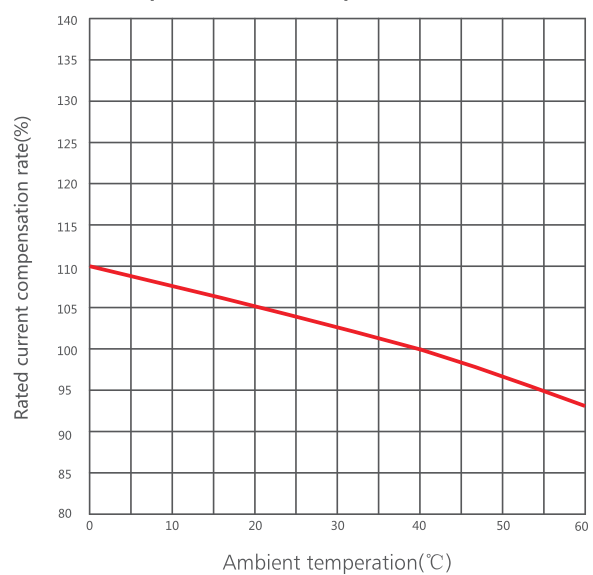


NMF6

Rated Current(500A-800A)



Temperature compensation curves





Characteristics Curves Table

Test No.	Load current	Rated current	Initial state	Time	Estimated result
Over-load					
1.	1.05 I _n	I _n ≤ 63A	cold state	t < 1h	Non-trip
		I _n > 63A		t < 2h	
2.	1.30 I _n	I _n ≤ 63A	continuing the test	t < 1h	Trip
Short circuit					
3.	10 I _n *80%	All ampere	cold state	t < 0.2s	Non-trip
	10 I _n *120%			t < 0.2s	Trip

Temperature Compensation Table

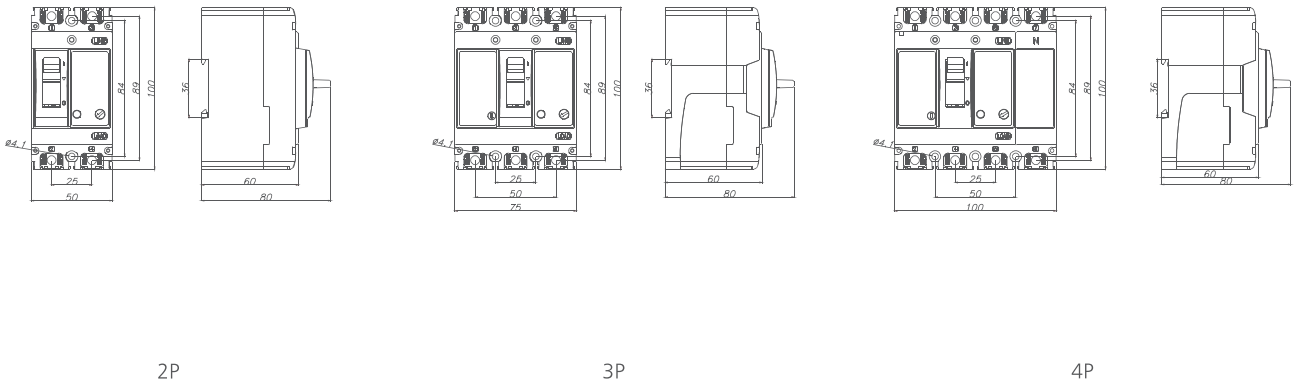
(IEC/EN 60947-2) (Calibration at 40°C)

Product code	Rated current range	Compensation coefficient						
		0°C	10°C	20°C	30°C	40°C	50°C	60°C
NMF1-S ,H 63	15A~63A	110%	108%	107%	104%	100%	95%	90%
NMF2-S ,H 125	15A~125A	112%	110%	107%	103%	100%	94%	89%
NMF3-S ,H 160	15A~160A	112%	110%	108%	104%	100%	96%	91%
NMF4-S ,H 250	100A~250A	112%	110%	107%	104%	100%	96%	92%
NMF5-S ,H 400	250A~400A	110%	108%	105%	103%	100%	97%	94%
NMF6-S ,H 800	500A~800A	110%	107%	105%	102%	100%	96%	93%

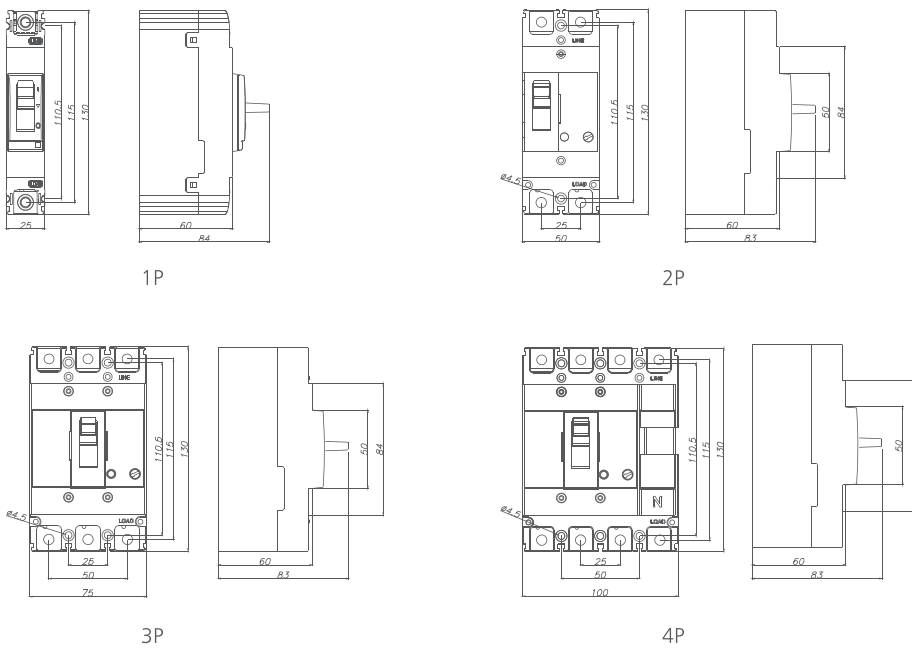


Outline Dimension

NMF1(63A)



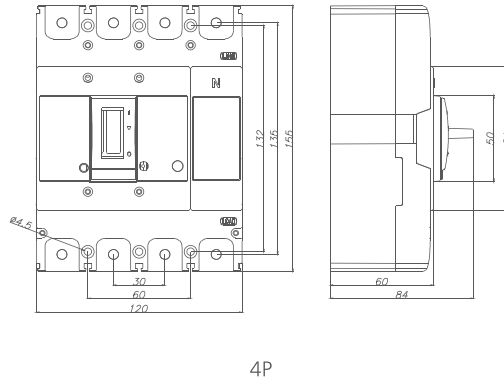
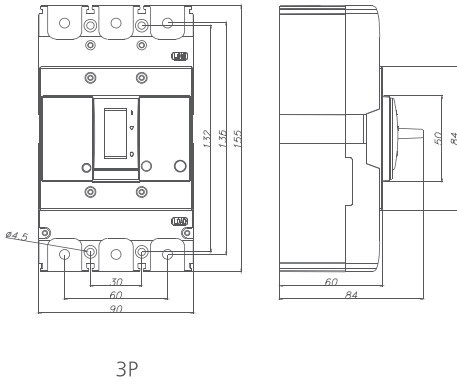
NMF2(125A)



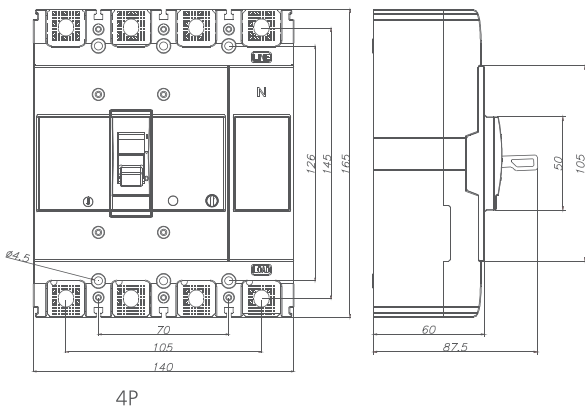
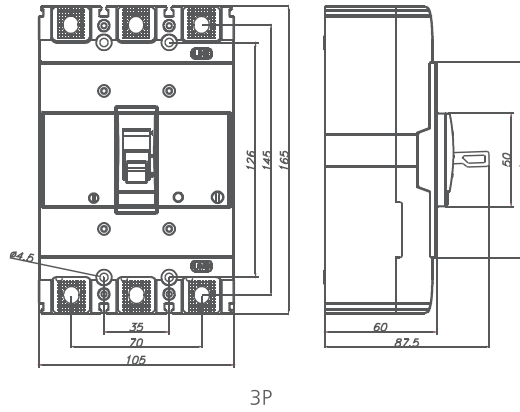
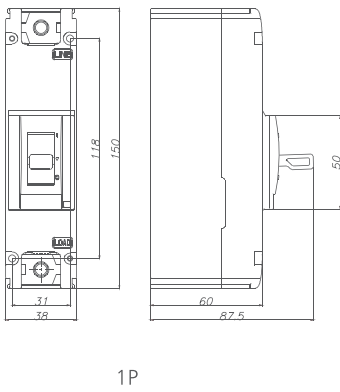


Outline Dimension

NMF3(160A)



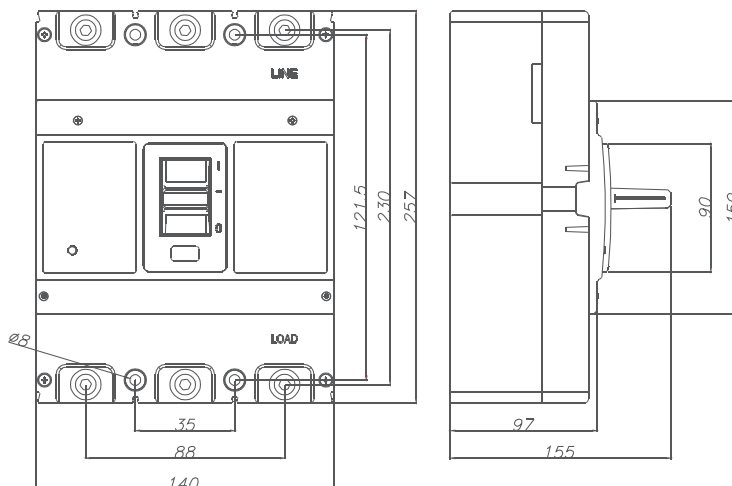
NMF4(250A)



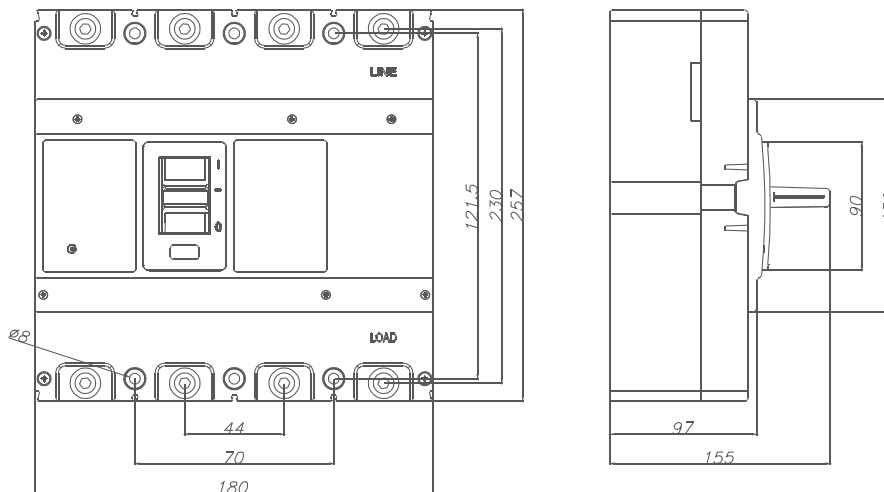


Outline Dimension

NMF5(400A)



3P

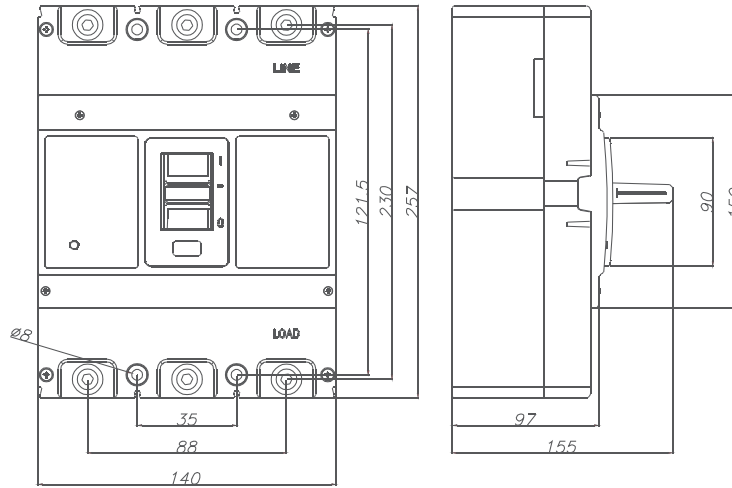


4P

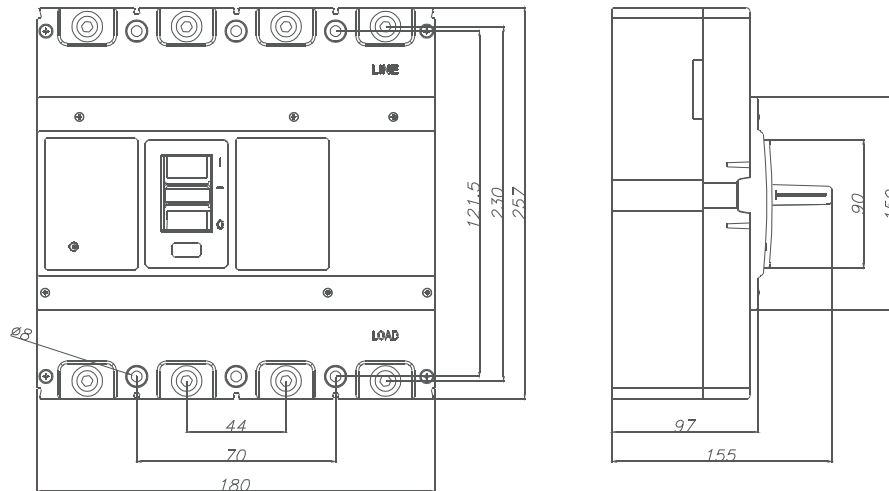


Outline Dimension

NMF5(400A)



3P



4P



Ordering code

● NM MCCB

Item NO.	Frame	Rated current(A)	Product code	
			2 poles	3 poles
1	NM2-50	5	NM2-50/2-5	NM2-50/3-5
2		10	NM2-50/2-10	NM2-50/3-10
3		15	NM2-50/2-15	NM2-50/3-15
4		20	NM2-50/2-20	NM2-50/3-20
5		30	NM2-50/2-30	NM2-50/3-30
6		40	NM2-50/2-40	NM2-50/3-40
7		50	NM2-50/2-50	NM2-50/3-50
8	NM2-100	63	NM2-100/2-63	NM2-50/3-63
9		80	NM2-100/2-80	NM2-50/3-80
10		100	NM2-100/2-100	NM2-50/3-100

Item NO.	Frame	Rated current(A)	Product code(S type)				Product code(H type)			
			1 pole	2 poles	3 poles	4 poles	1 pole	2 poles	3 poles	4 poles
1	NMF1 (63A)	15	-	NMF1-S2/15	NMF1-S3/15	NMF1-S4/15	-	NMF1-H2/15	NMF1-H3/15	NMF1-H4/15
2		20	-	NMF1-S2/20	NMF1-S3/20	NMF1-S4/20	-	NMF1-H2/20	NMF1-H3/20	NMF1-H4/20
3		30	-	NMF1-S2/30	NMF1-S3/30	NMF1-S4/30	-	NMF1-H2/30	NMF1-H3/30	NMF1-H4/30
4		40	-	NMF1-S2/40	NMF1-S3/40	NMF1-S4/40	-	NMF1-H2/40	NMF1-H3/40	NMF1-H4/40
5		50	-	NMF1-S2/50	NMF1-S3/50	NMF1-S4/50	-	NMF1-H2/50	NMF1-H3/50	NMF1-H4/50
6		63	-	NMF1-S2/63	NMF1-S3/63	NMF1-S4/63	-	NMF1-H2/63	NMF1-H3/63	NMF1-H4/63
7	NMF2 (125A)	15	NMF2-S1/15	NMF2-S2/15	NMF2-S3/15	NMF2-S4/15	NMF2-S1/15	NMF2-H2/15	NMF2-H3/15	NMF2-H4/15
8		20	NMF2-S1/20	NMF2-S2/20	NMF2-S3/20	NMF2-S4/20	NMF2-S1/20	NMF2-H2/20	NMF2-H3/20	NMF2-H4/20
9		30	NMF2-S1/30	NMF2-S2/30	NMF2-S3/30	NMF2-S4/30	NMF2-S1/30	NMF2-H2/30	NMF2-H3/30	NMF2-H4/30
10		40	NMF2-S1/40	NMF2-S2/40	NMF2-S3/40	NMF2-S4/40	NMF2-S1/40	NMF2-H2/40	NMF2-H3/40	NMF2-H4/40
11		50	NMF2-S1/50	NMF2-S2/50	NMF2-S3/50	NMF2-S4/50	NMF2-S1/50	NMF2-H2/50	NMF2-H3/50	NMF2-H4/50
12		60	NMF2-S1/60	NMF2-S2/60	NMF2-S3/60	NMF2-S4/60	NMF2-S1/60	NMF2-H2/60	NMF2-H3/60	NMF2-H4/60
13		75	NMF2-S1/75	NMF2-S2/75	NMF2-S3/75	NMF2-S4/75	NMF2-S1/75	NMF2-H2/75	NMF2-H3/75	NMF2-H4/75
14		80	NMF2-S1/80	NMF2-S2/80	NMF2-S3/80	NMF2-S4/80	NMF2-S1/80	NMF2-H2/80	NMF2-H3/80	NMF2-H4/80
15		100	NMF2-S1/100	NMF2-S2/100	NMF2-S3/100	NMF2-S4/100	NMF2-S1/100	NMF2-H2/100	NMF2-H3/100	NMF2-H4/100
16		125	NMF2-S1/125	NMF2-S2/125	NMF2-S3/125	NMF2-S4/125	NMF2-S1/125	NMF2-H2/125	NMF2-H3/125	NMF2-H4/125
17	NMF3 (160A)	15	-	-	NMF3-S3/15	NMF3-S4/15	-	-	NMF3-H3/15	NMF3-H4/15
18		20	-	-	NMF3-S3/20	NMF3-S4/20	-	-	NMF3-H3/20	NMF3-H4/20
19		30	-	-	NMF3-S3/30	NMF3-S4/30	-	-	NMF3-H3/30	NMF3-H4/30
20		40	-	-	NMF3-S3/40	NMF3-S4/40	-	-	NMF3-H3/40	NMF3-H4/40
21		50	-	-	NMF3-S3/50	NMF3-S4/50	-	-	NMF3-H3/50	NMF3-H4/50
22		60	-	-	NMF3-S3/60	NMF3-S4/60	-	-	NMF3-H3/60	NMF3-H4/60
23		80	-	-	NMF3-S3/80	NMF3-S4/80	-	-	NMF3-H3/80	NMF3-H4/80
24		100	-	-	NMF3-S3/100	NMF3-S4/100	-	-	NMF3-H3/100	NMF3-H4/100
25		125	-	-	NMF3-S3/125	NMF3-S4/125	-	-	NMF3-H3/125	NMF3-H4/125
26		140	-	-	NMF3-S3/140	NMF3-S4/140	-	-	NMF3-H3/140	NMF3-H4/140
27	160	-	-	NMF3-S3/160	NMF3-S4/160	-	-	NMF3-H3/160	NMF3-H4/160	
28	NMF4 (250A)	100	NMF4-S1/100	-	NMF4-S3/100	NMF4-S4/100	NMF4-H1/100	-	NMF4-H3/100	NMF4-H4/100
29		125	NMF4-S1/125	-	NMF4-S3/125	NMF4-S4/125	NMF4-H1/125	-	NMF4-H3/125	NMF4-H4/125
30		160	NMF4-S1/160	-	NMF4-S3/160	NMF4-S4/160	NMF4-H1/160	-	NMF4-H3/160	NMF4-H4/160
31		180	NMF4-S1/180	-	NMF4-S3/180	NMF4-S4/180	NMF4-H1/180	-	NMF4-H3/180	NMF4-H4/180
32		200	NMF4-S1/200	-	NMF4-S3/200	NMF4-S4/200	NMF4-H1/200	-	NMF4-H3/200	NMF4-H4/200
33		225	NMF4-S1/225	-	NMF4-S3/225	NMF4-S4/225	NMF4-H1/225	-	NMF4-H3/225	NMF4-H4/225
34		250	NMF4-S1/250	-	NMF4-S3/250	NMF4-S4/250	NMF4-H1/250	-	NMF4-H3/250	NMF4-H4/250
35	NMF5 (400A)	250	-	-	NMF5-S3/250	NMF5-S4/250	-	-	NMF5-H3/250	NMF5-H4/250
36		315	-	-	NMF5-S3/315	NMF5-S4/315	-	-	NMF5-H3/315	NMF5-H4/315
37		350	-	-	NMF5-S3/350	NMF5-S4/350	-	-	NMF5-H3/350	NMF5-H4/350
38	400	-	-	NMF5-S3/400	NMF5-S4/400	-	-	NMF5-H3/400	NMF5-H4/400	
39	NMF6 (800A)	500	-	-	NMF5-S3/500	NMF5-S4/500	-	-	NMF5-H3/500	NMF5-H4/500
40		630	-	-	NMF5-S3/630	NMF5-S4/630	-	-	NMF5-H3/630	NMF5-H4/630
41		700	-	-	NMF5-S3/700	NMF5-S4/700	-	-	NMF5-H3/700	NMF5-H4/700
42		800	-	-	NMF5-S3/800	NMF5-S4/800	-	-	NMF5-H3/800	NMF5-H4/800



Built-in Accessories



Product code	Specification
SHT	Shunt Trip
AX	Auxiliary Switch
AL	Alarm Switch
AX+AX	Combination switch:Two Auxiliary Switch in one body
AX+AL	Combination switch:One Auxiliary Switch and one Alarm Switch in one body

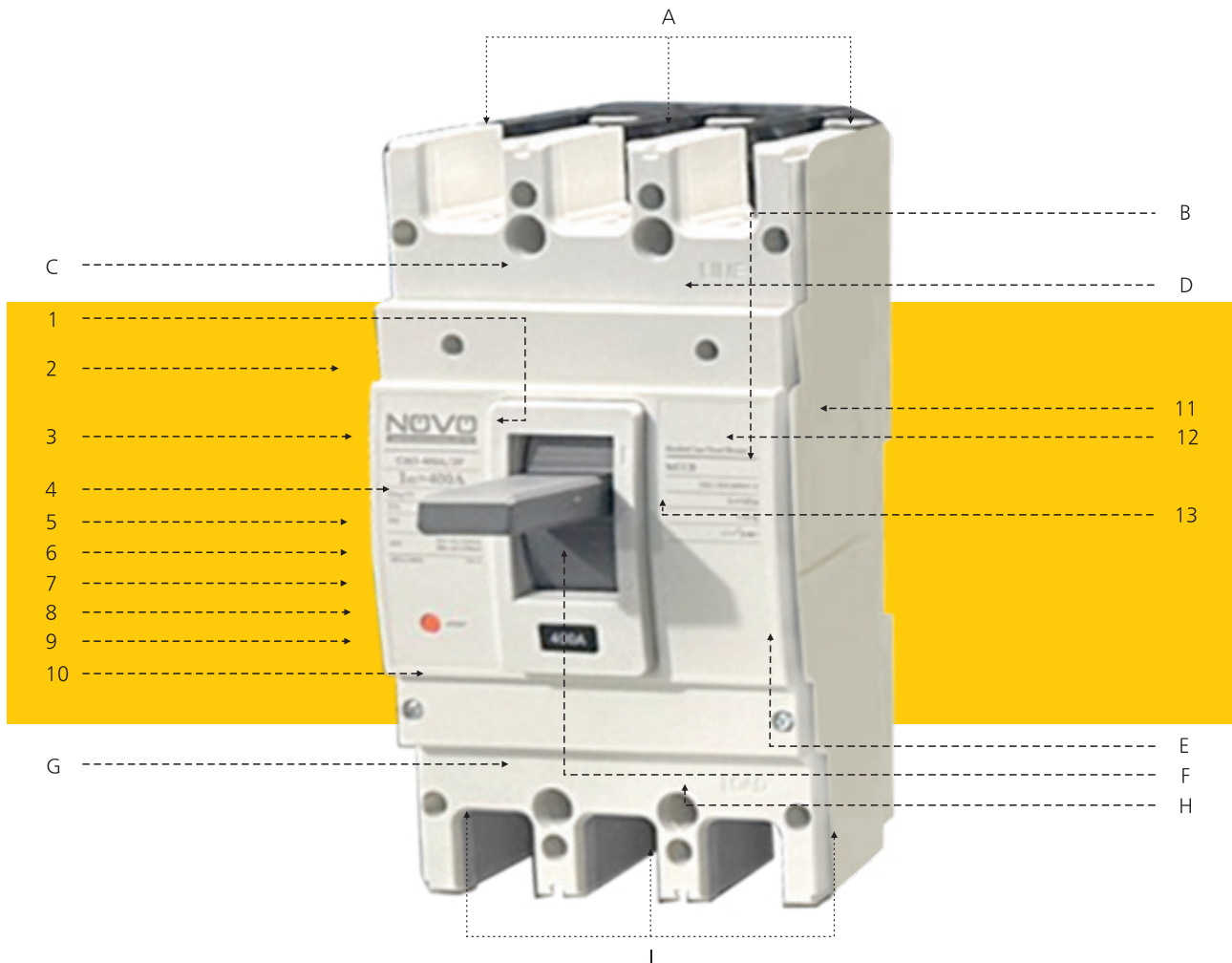
Built-out Accessories



Product code	Specification
STC 12	Short Terminal Cover 12 ,F1(63A) 2P
STC 13	Short Terminal Cover 13 ,F1(63A) 3P
STC 21	Short Terminal Cover 21 ,F2(125A) 1P
STC 22	Short Terminal Cover 22 ,F2(125A) 2P
STC 23	Short Terminal Cover 23 ,F2(125A) 3P
STC 24	Short Terminal Cover 24 ,F2(125A) 4P
STC 43	Short Terminal Cover 43 ,F4(250A) 3P
STC 44	Short Terminal Cover 44 ,F4(250A) 4P
IB 01	Inter-phase Insulation Barrier 01 for F1(63A),F2(125A)
IB 02	Inter-phase Insulation Barrier 02 for F4(250A)
IB 03	Inter-phase Insulation Barrier 03 for F5(400A)
IB 04	Inter-phase Insulation Barrier 04 for F6(800A)
CCB 01	Copper Connection Bar 01 for F2(125A)
CCB 02	Copper Connection Bar 02 for F4(250A)
CCB 03	Copper Connection Bar 03 for F5(400A)
CCB 04	Copper Connection Bar 04 for F6(800A)



MARKING & CONFIGURATION





Printing instruction

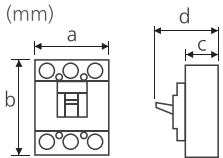
Function instruction

1	Ue: Rated operational voltage	A	Up-stream cable connections
2	Company logo	B	Push to trip button for earth fault
3	Rated frequency	C	Fixing hole
4	In: Rated current	D	Fixing hole
5	I Δ n: Rated residual operating current(mA)	E	Push to trip button for over current trip
6	I Δ no: Rated residual non-operating current (mA)	F	Operating handle
7	Uimp: Rated impulse withstand voltage	G	Fixing hole
8	Instantaneous/short circuit trip current	H	Fixing hole
9	Calibrated temperature as defined by IEC/EN 60947-2	I	Down-stream cable connections
10	Company name		
11	Product code		
12	Icu: Ultimate breaking capacity		
13	Ics: Service breaking capacity		



Technical Data Table



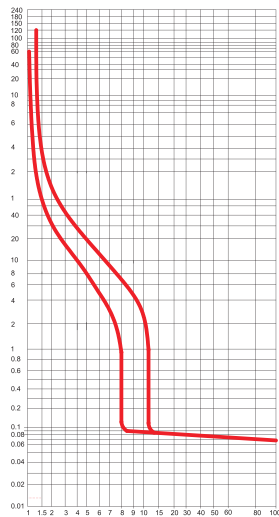
Ampere frame size		50AF								
Product type		NE2-50/2				NE2-50/3				
Number of poles		2				3				
Rated frequency (Hz)		50/60				50/60				
Rated current (A)	In	5, 10		15, 20, 30, 40, 50		5, 10		15, 20, 30, 40, 50		
Rated voltage(V)	Ue	220/415				220/415				
Rated Insulated voltage (V), 50/60Hz	Ui	500				500				
Rated impulse voltage (kV)	Uimp	6				6				
Rated residual current (mA)		15/30				15/30				
Action time (sec)		<0.03 sec				<0.03 sec				
Ultimate breaking capability(kA) GB 14048.2, IEC/EN 60947-2	Icu	220V	415V	220V	415V	220V	415V	220V	415V	
		5	2.5	10	6	5	2.5	10	6	
Ics=%×Icu		75%		75%		75%		75%		
Dimensions (mm) 		a	50				75			
		b	98				98			
		c	60				60			
		d	80				80			
Weight (kg)		0.31				0.41				



Characteristics Curves

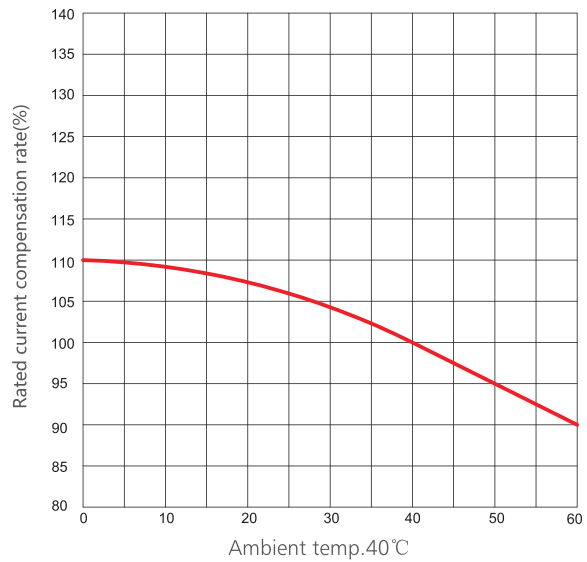
NE2-50

Rated Current(5A-50A)



Rated current times

Temperature compensation curves





Characteristics Curves Table

Test No.	Load current	Rated current	Initial state	Time	Estimated result
Over-load					
1.	1.05 I _n	I _n ≤ 63A	cold state	t < 1h	Non-trip
		I _n > 63A		t < 2h	
2.	1.30 I _n	I _n ≤ 63A	continuing the test	t < 1h	Trip
Short circuit					
3.	10 I _n *80%	All ampere	cold state	t < 0.2s	Non-trip
	10 I _n *120%			t < 0.2s	Trip

Temperature Compensation Table

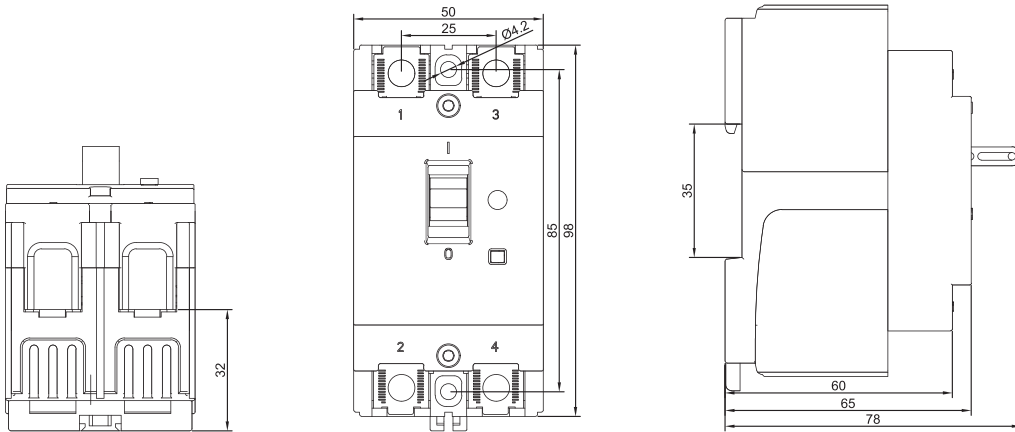
(IEC/EN 60947-2) (Calibration at 40°C)

Product code	Rated current range	Compensation coefficient						
		0°C	10°C	20°C	30°C	40°C	50°C	60°C
NE2-50	5A~50A	110%	109%	107%	104%	100%	95%	90%



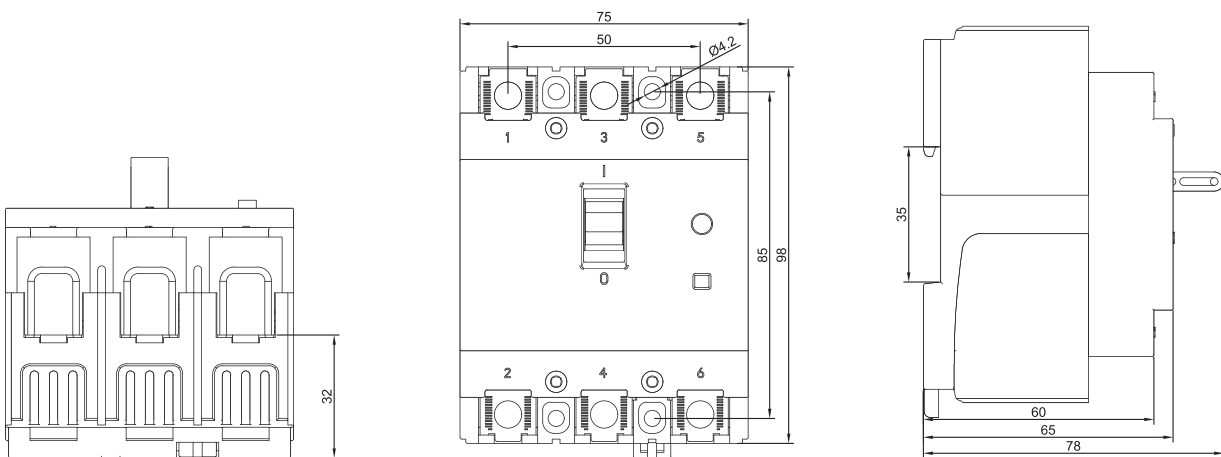
Outline Dimension

NE2-50/2P



2P

NE2-50/3P



3P

TYPE GUIDE

CLASSIFICATION

According to the Pole : 2-poles, 3-poles, 4-poles
 According to the Breaking Capacity : S-type, H-type
 According to the Rated current : Fix type, Adjustable type(0.8In~1.0In)
 According to the Trip action time : Fix type, Adjustable type(0.1s / 0.3s / 0.5s or 0.45s/1.0s/2.0s)
 According to the Rated residual current : Fix type, Adjustable type(30mA / 100mA / 300mA / 500mA)

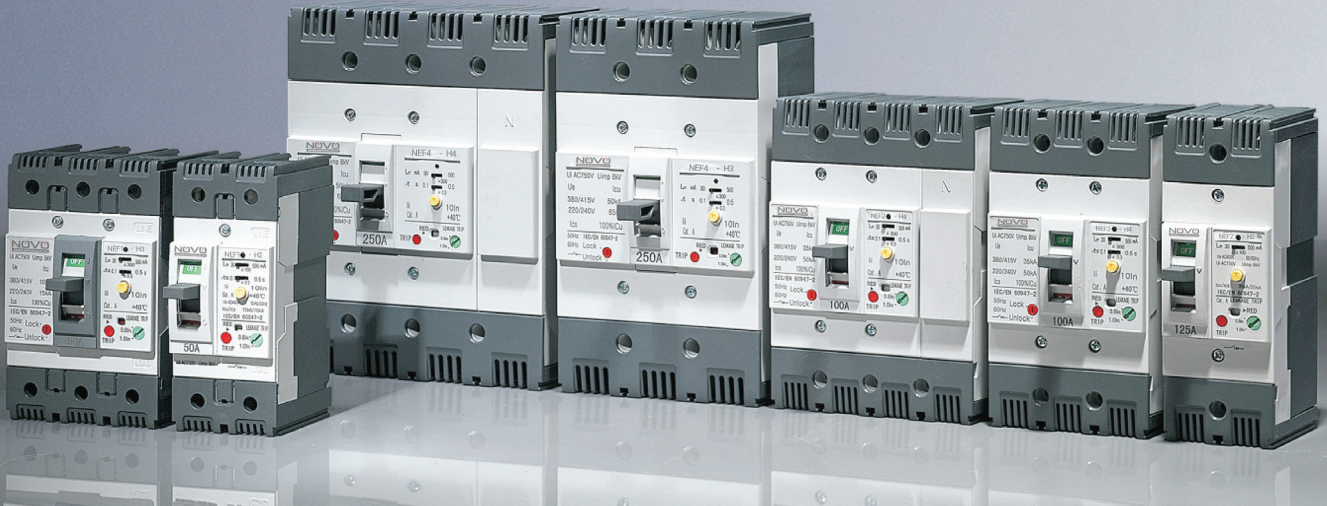


NOVO electric	ELCB Series	Ampere frae	Breaking capacity level	Number of the poles	Rated current	Rated residual current	Built-in Accessories
		F1 63A	S Standard capacity type	1 - One pole	15A~63A	F1 30 mA	AX Auxiliary switch
		F2 125A	H High capacity type	2 - Two Poles	15A~125A	F2 100 mA	AL Alarm switch
		F3 160A		3 - Three Poles	15A~160A	F3 300 mA	SHT Shunt tirp
		F4 250A		4 - Four poles	100A~250A	F4 500 mA	AX+AX Auxiliary switch Auxiliary switch
		F5 400A			250A~400A	F5 Adjustable	
		F6 800A			500A~800A	F6	AX+AL Auxiliary switch Alarm switch

Remark:
 1.For the rated current ,it has fix type and adjustable type .
 The default type is adjustable type(0.8In~1.0In) .
 If need fix type or have other special requirement ,please advise in advance .

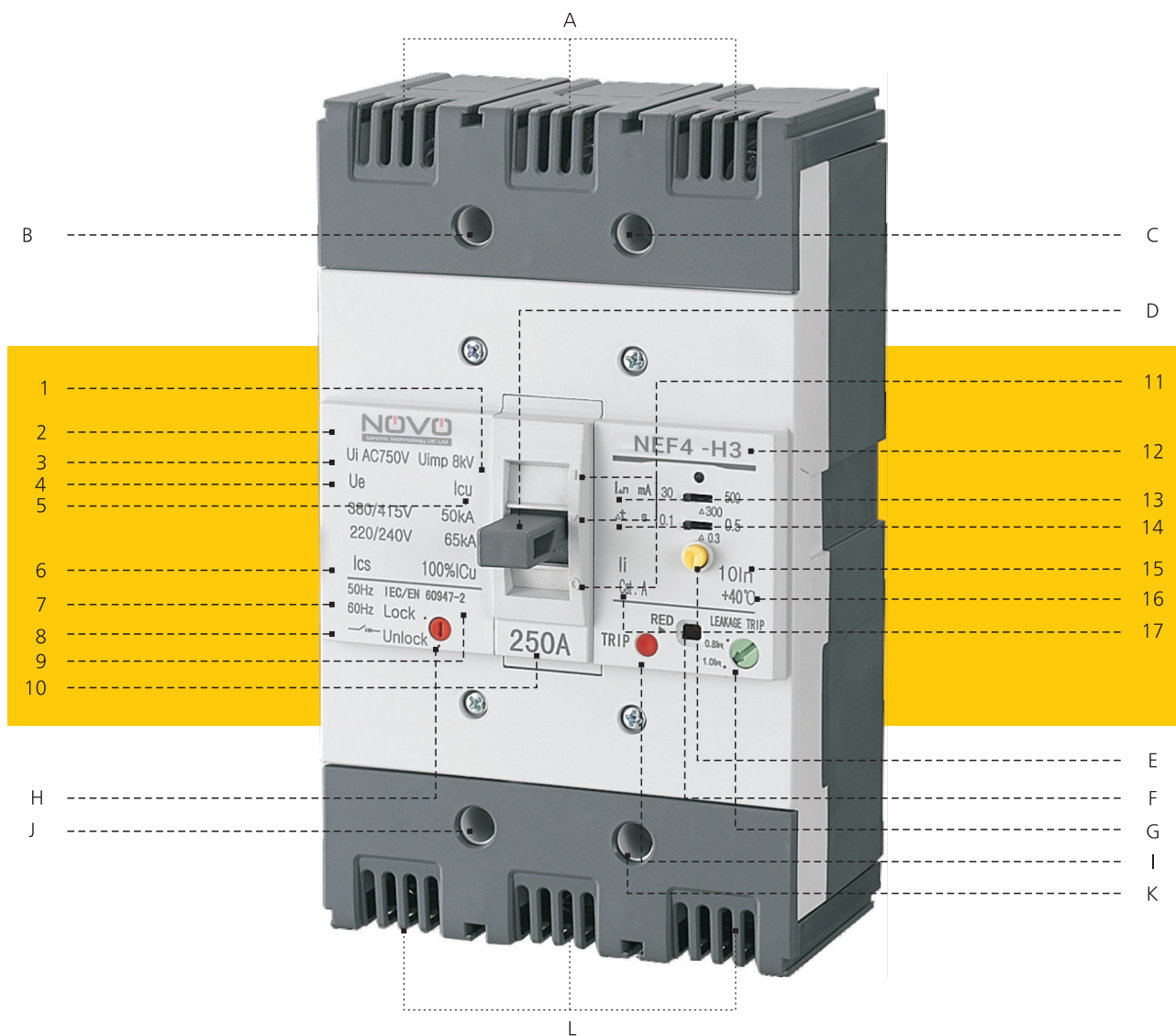
2.For the trip action time ,it has fix type and adjustable type.
 The default type is adjustable type(0.1s / 0.3s / 0.5s or 0.45s/1.0s/2.0s) .
 If need fix type or have other special requirement,please advise in advance.

Built-out Accessories	
IB	Inter-phase Insulation Barrier
STC	Short Terminal Cover
CCB	Copper Connection Bar





Marking & Configuration





Marking & Configuration

Printing instruction

Function instruction

1	Uimp: Rated impulse withstand voltage	A	Up-stream cable connections
2	Company logo	B	Fixing hole
3	Ui: Rated insulation voltage	C	Fixing hole
4	Ue: Rated operational voltage	D	Operating handle
5	Icu: Ultimate breaking capacity	E	Push to trip button for earth fault
6	Ics: Service breaking capacity	F	Trip indication by earth fault
7	Rated frequency	G	Long time current setting
8	Symbol indicating suitability for Isolation as defined by IEC/EN 60947-2	H	Lock setting for the operating handle
9	IEC/EN standard	I	Push to trip button for over current trip
10	In: Rated current	J	Fixing hole
11	Indication of closed (I/ON) position	K	Fixing hole
	Indication of free trip position	L	Down-stream cable connections
	Indication of open (O/OFF) position		
12	Product code		
13	I Δ n: Residual current setting		
14	Δ t: Residual trip time setting		
15	Instantaneous/short circuit trip current		
16	Calibrated temperature as defined by IEC/EN 60947-2		
17	Utilization category		



Technical Data Table



Ampere frame size		NEFI (63A)			
Breaking capacity code		S		H	
Product code and pole		2P	3P	2P	3P
		NEFI-S2	NEFI-S3	NEFI-H2	NEFI-H3
Protective function		Overload & Short-circuit & Ground fault			
Rated current ,I _n (A)		15, 20, 30, 40, 50, 63			
Rated residual current ,I _n (A)	Operating ,I _{Δn} (mA)	30, 50, 100, 200, 300, 500			
	Non-operating ,I _{Δno} (mA)	15, 25, 50, 100, 150, 250			
Adjustable part	Rated current (0.8I _n ~1.0I _n) ^①	√		√	
	Lockup device for operating handle ^②	-	√	-	√
	Residual current ,I _{Δn} ^③	30mA / 100mA / 300mA / 500mA			
	Trip action time ^④	0.1s / 0.3s / 0.5s			
Rated operational voltage ,U _e (V) ,AC 50/60 Hz		240V/415V			
Rated insulation voltage ,U _i (V)		1000			
Rated impulse withstand voltage ,U _{imp} (kV)		8			
Residual current off-time at I _{Δn} ,Sec (s)		0.1			
Standard		Conformity with IEC / EN 60947-2			
Rated frequency (Hz)		50/60 Hz			
Rated short-circuit breaking capacity ,I _{cu} (kA)					
AC	240V	14		25	
	415V	5		7.5	
I _{cs} =% x I _{cu}		100%			
Mechanical life (circle)		8500			
Electrical life (circle)		1500			
Dimension Length*Width*Height (mm) 	2-poles	100*50*60			
	3-poles	100*75*60			
	4-poles	-			

① Optiona ② Optional ③ Optional ④ Optional

⑤ Frame F5(400) can extend to 500A,630A ELCB



Technical Data Table



NEF2 (125A)						NEF3 (160A)			
S			H			S		H	
2P	3P	4P	2P	3P	4P	3P	4P	3P	4P
NEF2-S2	NEF2-S3	NEF2-S4	NEF2-H2	NEF2-H3	NEF2-H4	NEF3-S3	NEF3-S4	NEF3-H3	NEF3-H4
Overload & Short-circuit & Ground fault						Overload & Short-circuit & Ground fault			
15, 20, 30, 40, 50, 60, 75, 80, 100, 125						15, 20, 30, 40, 50, 60, 80, 100, 125, 140, 160			
30, 50, 100, 200, 300, 500						30, 50, 100, 200, 300, 500			
15, 25, 50, 100, 150, 250						15, 25, 50, 100, 150, 250			
√			√			√		√	
-	√	√	-	√	√	√	√	√	√
30mA / 100mA / 300mA / 500mA						30mA / 100mA / 300mA / 500mA			
0.1s / 0.3s / 0.5s						0.1s / 0.3s / 0.5s			
240V/415V						240V/415V			
1000						1000			
8						8			
0.1						0.1			
Conformity with IEC / EN 60947-2						Conformity with IEC / EN 60947-2			
50/60 Hz						50/60 Hz			
35			50			50		65	
18			35			25		37	
100%						100%			
8500						7000			
1500						1000			
130*50*60						-			
130*75*60						155*90*60			
130*100*60						155*120*60			



Technical Data Table

Ampere frame size		NEF4 (250A)			
Breaking capacity code		S		H	
Product code and pole		3P	4P	3P	4P
		NEF4-S3	NEF4-S4	NEF4-H3	NEF4-H4
Protective function		Overload & Short-circuit & Ground fault			
Rated current ,I _n (A)		100、125、160、180、200、225、250			
Rated residual current	Operating ,I _{Δn} (mA)	30、50、100、200、300、500			
	Non-operating ,I _{Δno} (mA)	15、25、50、100、150、250			
Adjustable part	Rated current (0.8I _n ~1.0I _n) ^①	√		√	
	Lockup device for operating handle ^②	√	√	√	√
	Residual current ,I _{Δn} ^③	30mA / 100mA / 300mA / 500mA			
	Trip action time ^④	0.1s / 0.3s / 0.5s			
Rated operational voltage ,U _e (V) ,AC 50/60 Hz		240V/415V			
Rated insulation voltage ,U _i (V)		1000			
Rated impulse withstand voltage ,U _{imp} (kV)		8			
Residual current off-time at I _{Δn} ,Sec (s)		0.1			
Standard		Conformity with IEC / EN 60947-2			
Rated frequency (Hz)		50/60 Hz			
Rated short-circuit breaking capacity ,I _{cu} (kA)					
AC	240V	50		65	
	415V	37		50	
I _{cs} =% x I _{cu}		100%			
Mechanical life (circle)		7000			
Electrical life (circle)		1000			
Dimension Length*Width*Height (mm) 	2-poles	-			
	3-poles	165*105*60			
	4-poles	165*140*60			

① Optiona ② Optional ③ Optional ④ Optional

⑤ Frame F5(400) can extend to 500A,630A ELCB



Technical Data Table

NEF5 (400A)				NEF6 (800A)			
S		H		S		H	
3P	4P	3P	4P	3P	4P	3P	4P
NEF5-S3	NEF5-S4	NEF5-H3	NEF5-H4	NEF6-S3	NEF6-S4	NEF6-H3	NEF6-H4
Overload & Short-circuit & Ground fault				Overload & Short-circuit & Ground fault			
250、315、350、400Ⓞ				500、630、700、800			
30、50、100、200、300、500				30、50、100、200、300、500			
15、25、50、100、150、250				15、25、50、100、150、250			
-		-		-		-	
-	-	-	-	-	-	-	-
100mA / 300mA / 500mA				100mA / 300mA / 500mA			
0.1s / 0.3s / 2.0s				0.45s/1.0s/2.0s			
240V/415V				240V/415V			
1000				1000			
8				8			
0.1				0.1			
Conformity with IEC / EN 60947-2				Conformity with IEC / EN 60947-2			
50/60 Hz				50/60 Hz			
50		65		50		65	
37		50		37		50	
100%				100%			
4000				2500			
1000				500			
-				-			
257*140*103				275*210*103			
257*184*103				275*280*103			



Built-In Accessories



Shunt trip (SHT)

- The shunt trip is an accessory for remote control.
- The shunt will trip when the input voltage is 70% - 110% of the rated operational voltage.(US)



Auxiliary switch (AX)

- Auxiliary switch is used to indicate the "On" and "Off" status of the breaker.
- Each switch has two contacts with a common connection.
- One is open and the other closed when the circuit breaker is open, and viceversa.



Alarm switch (AL)

- Alarm switch will make immediate audio or visual indication in a tripped breaker due to overload, short circuit or shunt trip to remind people.
- This switch features a closed contact when the circuit breaker is tripped automatically.
- In other words, this switch does not function when the breaker is operated manually.



Combination switch (AX+AX)

It has two auxiliary switch(AX) in a body to connect into the same position of the breaker.



Combination switch (AX+AL)

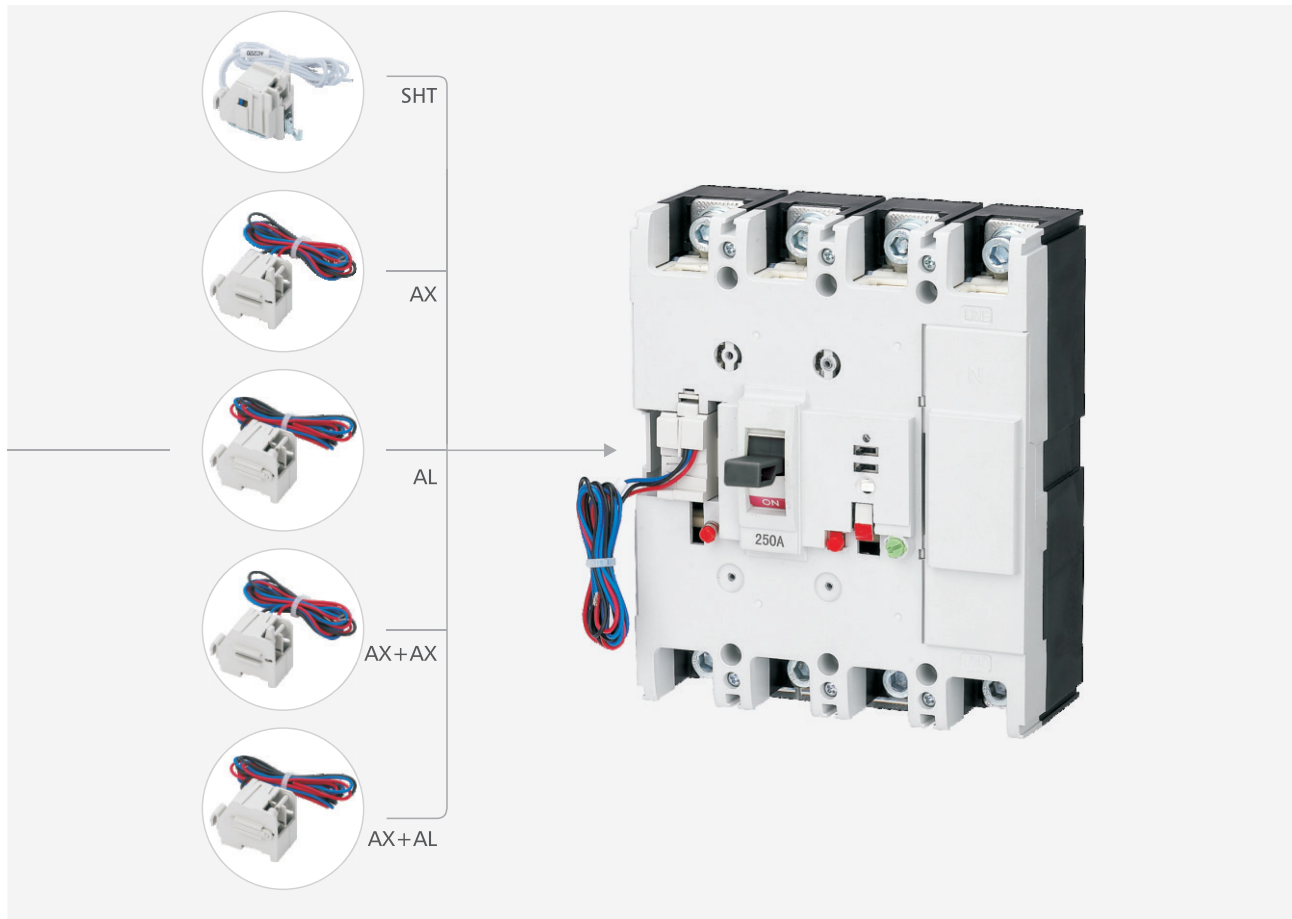
It has one auxiliary switch(AX) and one alarm switch(AL) in a body to connect into the same position of the breaker.

CONTACT(AX+AL)

ELCB	ON	OFF	TRIP
AX			
AL			



Built-In Accessories



Maximum Possibilities

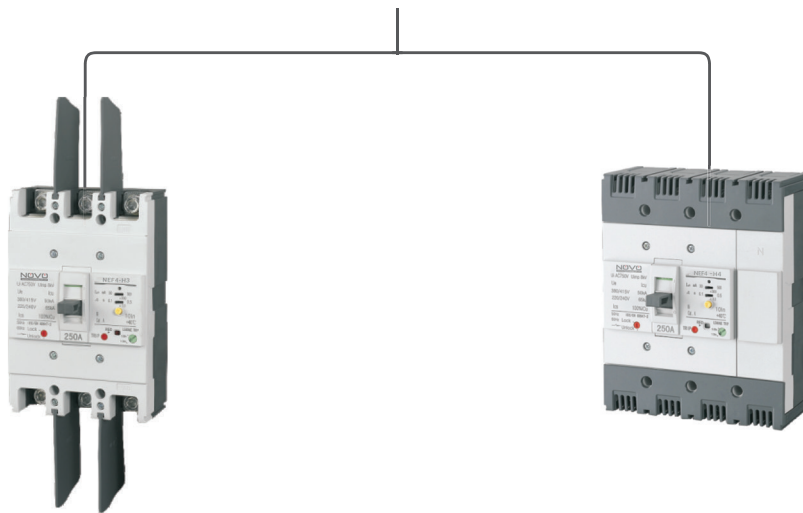
Frame	Poles	Left hole position					Right hole position				
		AX	AI1	SHT	AX+AX	AX+AL	AX	AL	SHT	AX+AX	AX+AL
NEF1 (63A)	2P	-	-	-	-	-	-	-	-	-	-
	3P	√	√	√	√	√	-	-	-	-	-
NEF2 (125A)	2P	-	-	-	-	-	-	-	-	-	-
	3P	√	√	√	√	√	-	-	-	-	-
NEF3 (160A)	4P	√	√	√	√	√	-	-	-	-	-
	3P	-	-	-	-	-	-	-	-	-	-
NEF4 (250A)	4P	-	-	-	-	-	-	-	-	-	-
	3P	√	√	√	√	√	-	-	-	-	-
NEF5 (400A)	4P	√	√	√	√	√	-	-	-	-	-
	3P	-	-	-	-	-	-	-	-	-	-
NEF6 (800A)	4P	-	-	-	-	-	-	-	-	-	-
	3P	-	-	-	-	-	-	-	-	-	-



Built-Out Accessories



Inter-phase Insulation Barrier + Short Terminal Cover



Inter-phase Insulation Barrier

Short Terminal Cover



Built-Out Accessories



Inter-phase Insulation Barrier (IB)

- Inter-phase insulation barrier is safety accessory, which is used for the insulation between the phases. It can guarantee the best insulation of the wiring terminal.
- They are compatible with both the short terminal covers. And it is ok to mount the inter-phase insulation barrier in both NM&NE series and every phase (2P, 3P and 4P).



Short Terminal Cover (STC)

- Short terminal cover is insulation accessory, which is used to prevent the direct contact between the terminal in circuit breaker and other live parts to ensure the safety of the users.
- All the terminal cover is designed with holes which can be knocked off to connect the cables of various wires and the copper platens.
- They are compatible with both the interphase insulation barrier and suitable for same phase & ampere frame of both NM&NE series (Such as NEFI-2P and NMFI-2P).



Copper Connection Bar (CCB)

- Copper connection bar is connection accessories, which is used to connect wire/cable or any other conductor together with NM&NE series.
- They are suitable for same phase and same ampere frame of both NRM&NRE series (Such as NEFI-2P AND NMFI-2P).

Maximum Possibilities

Frame	Poles	Short terminal cover (STC)		Inter-phase insulation barrier (IB)		Copper Connection Bar (CCB)	
		Product code	Each product require quantity	Product code	Each product require quantity	Product code	Each product require quantity
NEF1 (63A)	2P	STC 12	2	IB 01	2	-	-
	3P	STC 13	2	IB 01	4	-	-
NEF2 (125A)	2P	STC 22	2	IB 01	2	CCB 01	4
	3P	STC 23	2	IB 01	4	CCB 01	6
	4P	STC 24	2	IB 01	6	CCB 01	8
NEF3 (160A)	3P	-	-	-	-	-	-
	4P	-	-	-	-	-	-
NEF4 (250A)	3P	STC 43	2	IB 02	4	CCB 02	6
	4P	STC 44	2	IB 02	6	CCB 02	8
NEF5 (400A)	3P	-	-	IB 03	4	CCB 03	6
	4P	-	-	IB 03	6	CCB 03	8
NEF6 (800A)	3P	-	-	IB 04	4	CCB 04	6
	4P	-	-	IB 04	6	CCB 04	8

Remark: For the product code of short terminal cover (STC), STC12 means frame.1 two pole MCCB/ELCB.

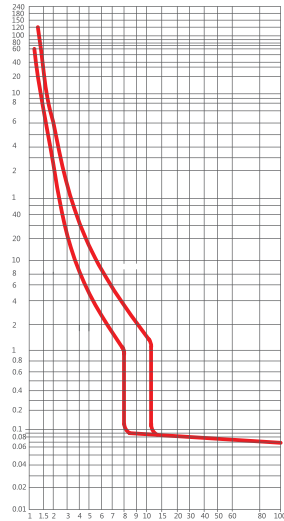


Characteristics curves

Curves (for power distribution,
calibrated at 40°C)

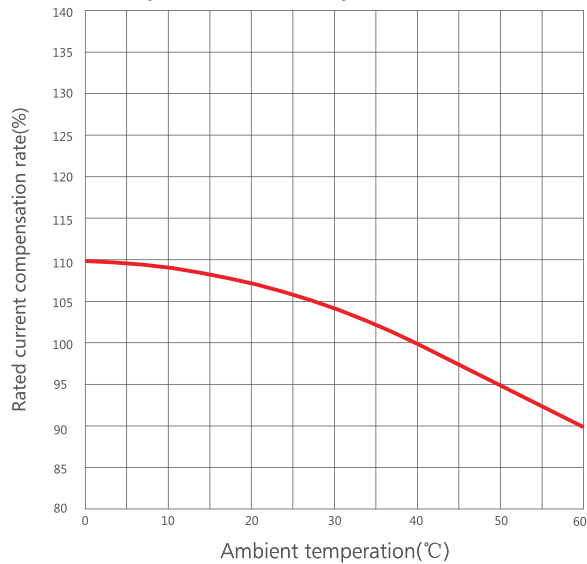
NEF1

Rated Current(15A-63A)



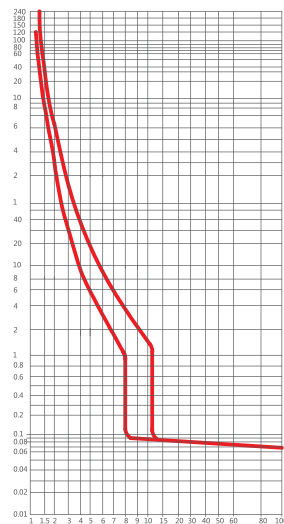
Rated current times

Temperature compensation curves



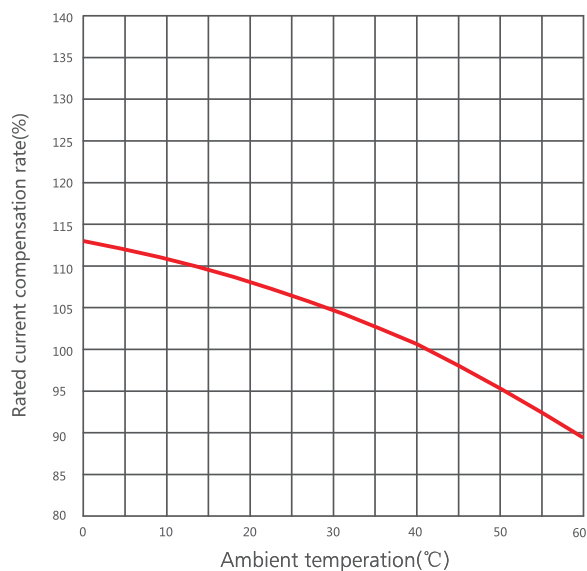
NEF2

Rated Current(15A-125A)



Rated current times

Temperature compensation curves



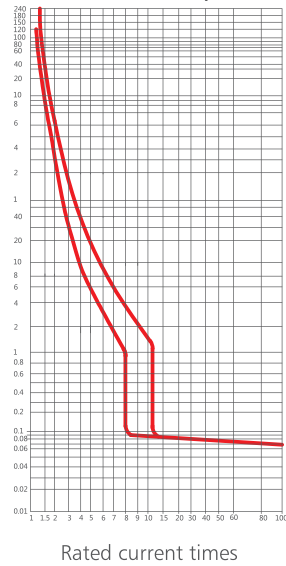


Characteristics curves

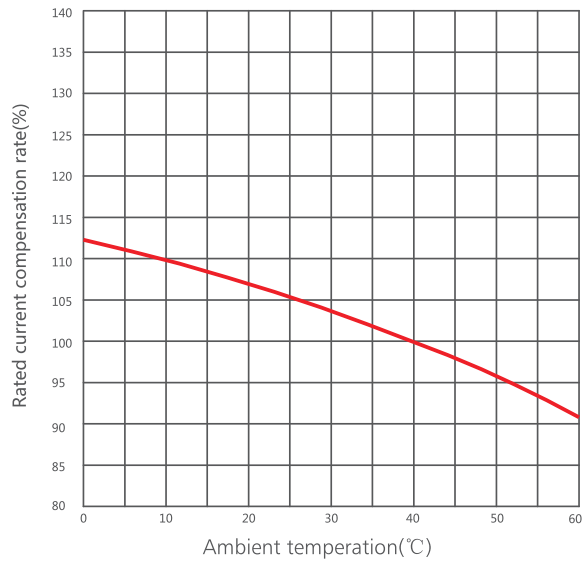
Curves (for power distribution, calibrated at 40°C)

NEF3

Rated Current(15A-160A)

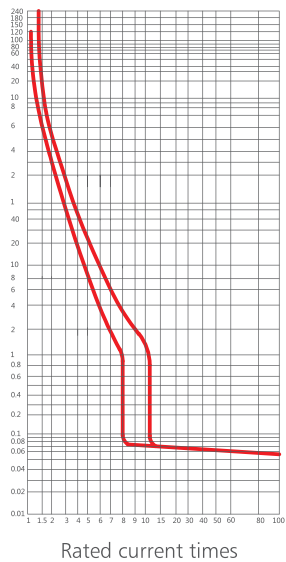


Temperature compensation curves

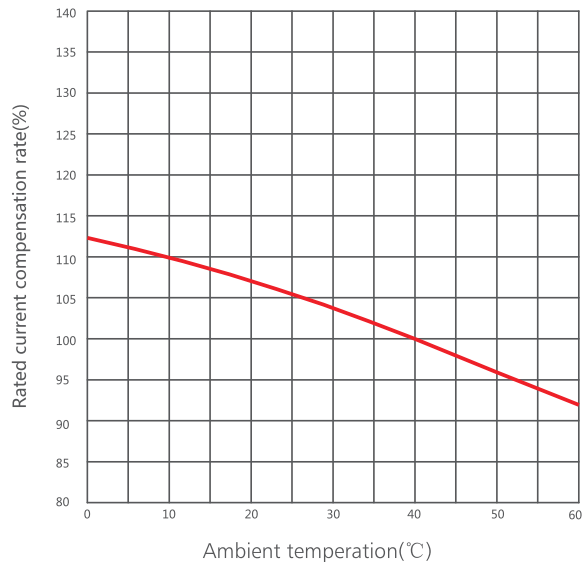


NEF4

Rated Current(100A-250A)



Temperature compensation curves



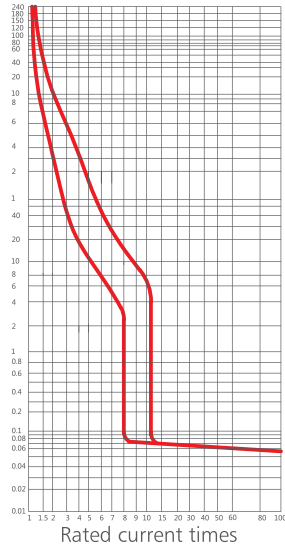


Characteristics curves

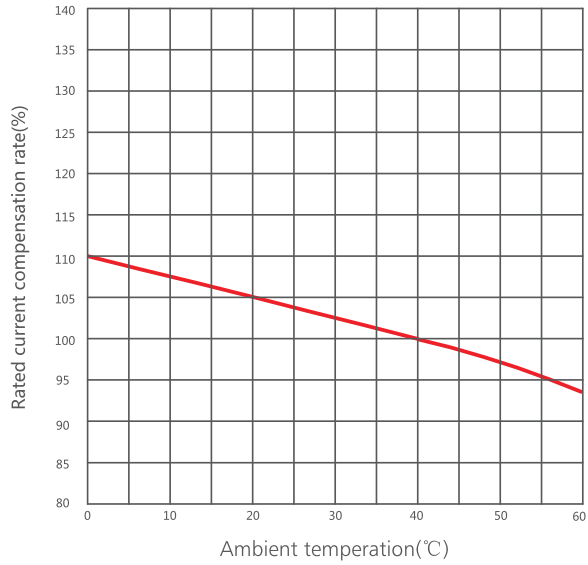
Curves (for power distribution, calibrated at 40°C)

NEF5

Rated Current(250A-400A)

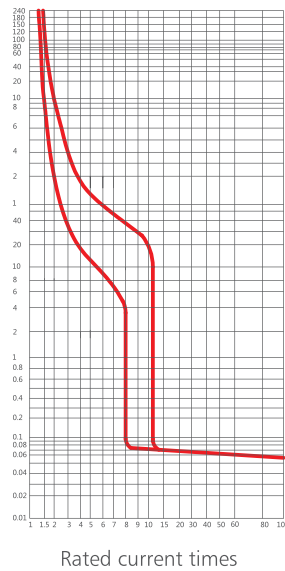


Temperature compensation curves

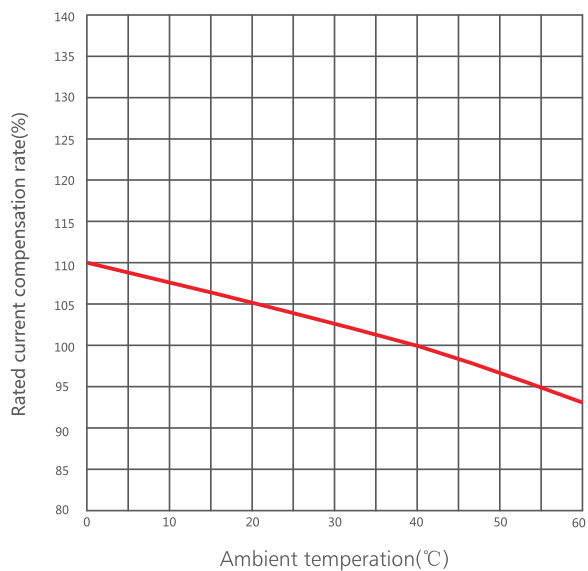


NEF6

Rated Current(500A-800A)



Temperature compensation curves





Characteristics Curves Table

Test No.	Load current	Rated current	Initial state	Time	Estimated result
Over-load					
1.	1.05 I _n	I _n ≤ 63A	cold state	t < 1h	Non-trip
		I _n > 63A		t < 2h	
2.	1.30 I _n	I _n ≤ 63A	continuing the test	t < 1h	Trip
Short circuit					
3.	10 I _n *80%	All ampere	cold state	t < 0.2s	Non-trip
	10 I _n *120%			t < 0.2s	Trip

Temperature Compensation Table

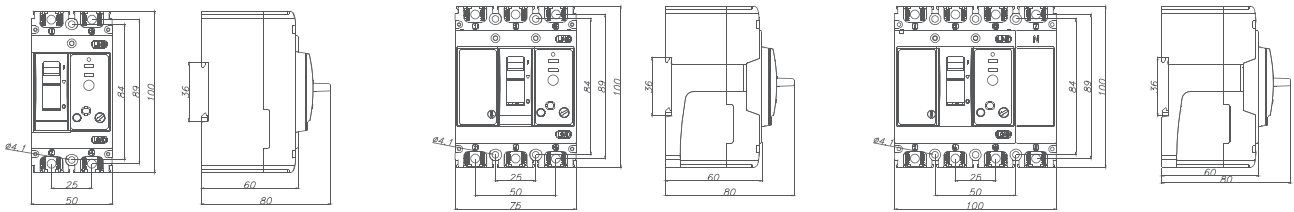
(IEC/EN 60947-2) (Calibration at 40°C)

Frame	Current range	Compensation coefficient						
		0°C	10°C	20°C	30°C	40°C	50°C	60°C
NEF1-S ,H 63	15A~63A	110%	108%	107%	104%	100%	95%	90%
NEF2-S ,H 125	15A~125A	112%	110%	107%	103%	100%	94%	89%
NEF3-S ,H 160	15A~160A	112%	110%	108%	104%	100%	96%	91%
NEF4-S ,H 250	100A~250A	112%	110%	107%	104%	100%	96%	92%
NEF5-S ,H 400	250A~400A	110%	108%	105%	103%	100%	97%	94%
NEF6-S ,H 800	500A~800A	110%	107%	105%	102%	100%	96%	93%



Outline Dimension

NEF1(63)

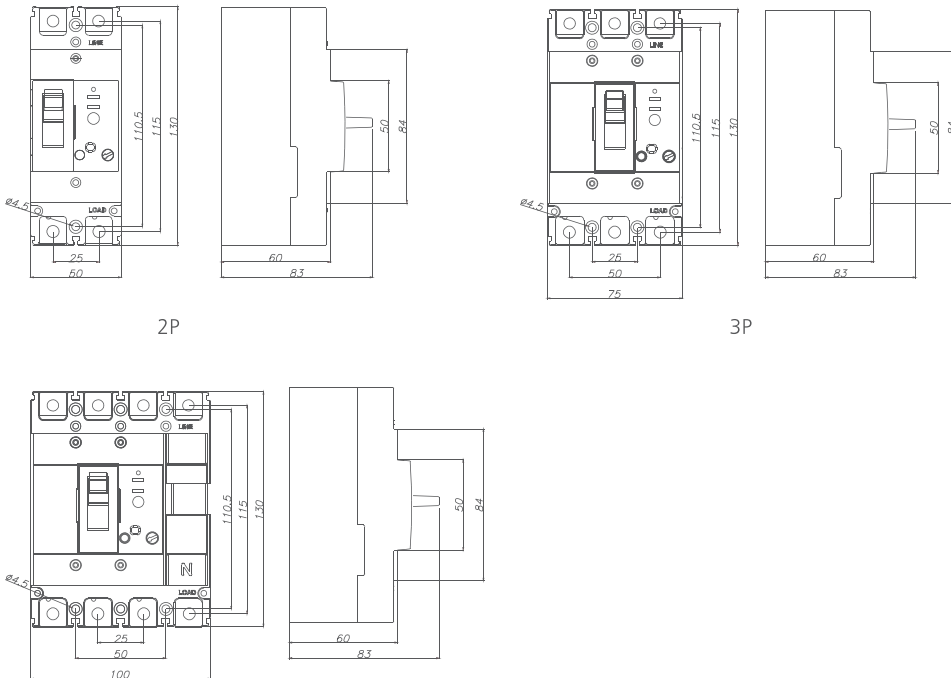


2P

3P

4P

NEF2(125)



2P

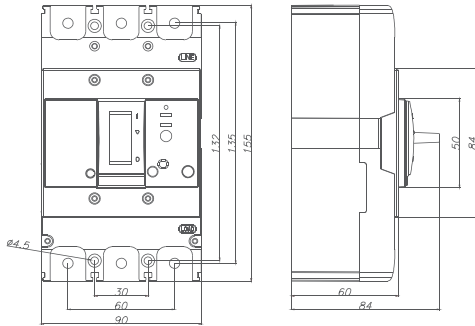
3P

4P

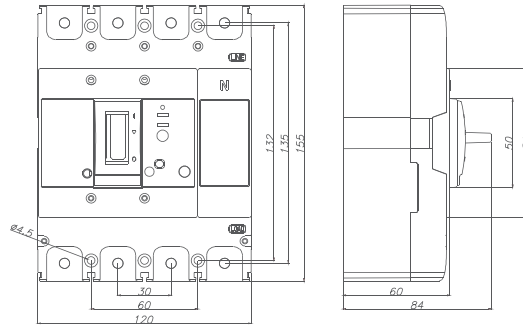


Outline Dimension

NEF3(160)

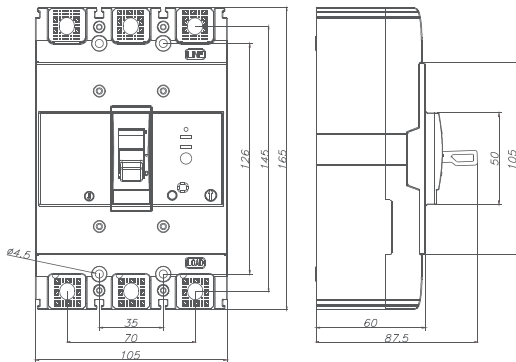


3P

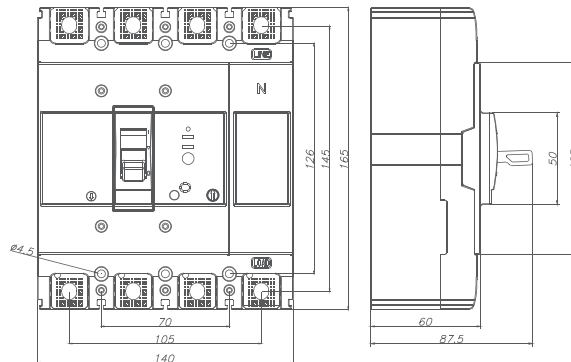


4P

NEF4(250)



3P

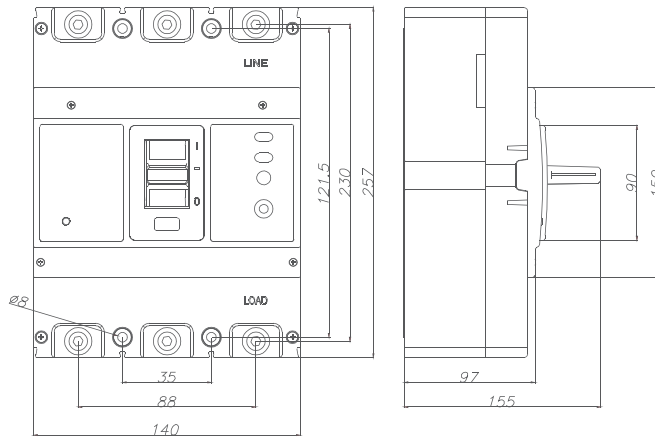


4P

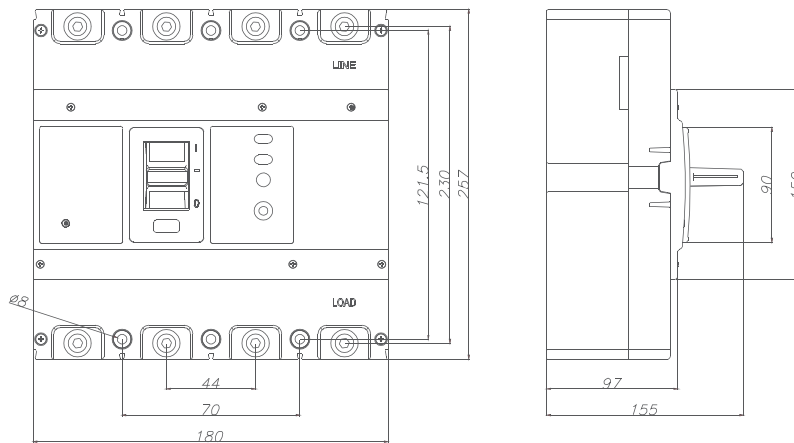


Outline Dimension

NEF5(400)



3P

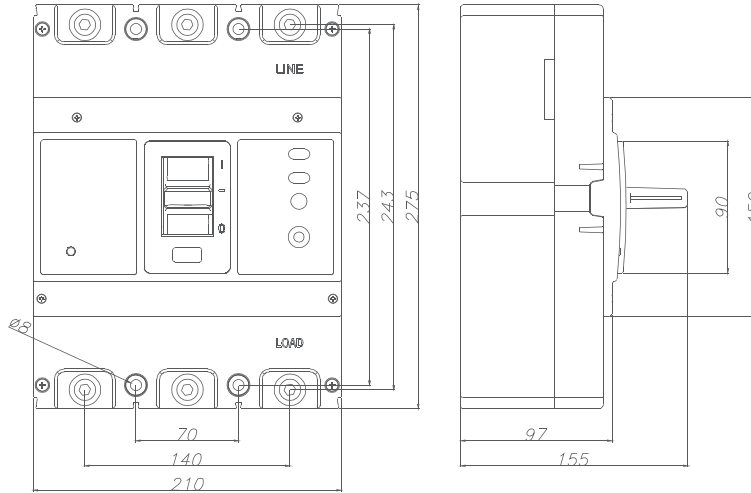


4P

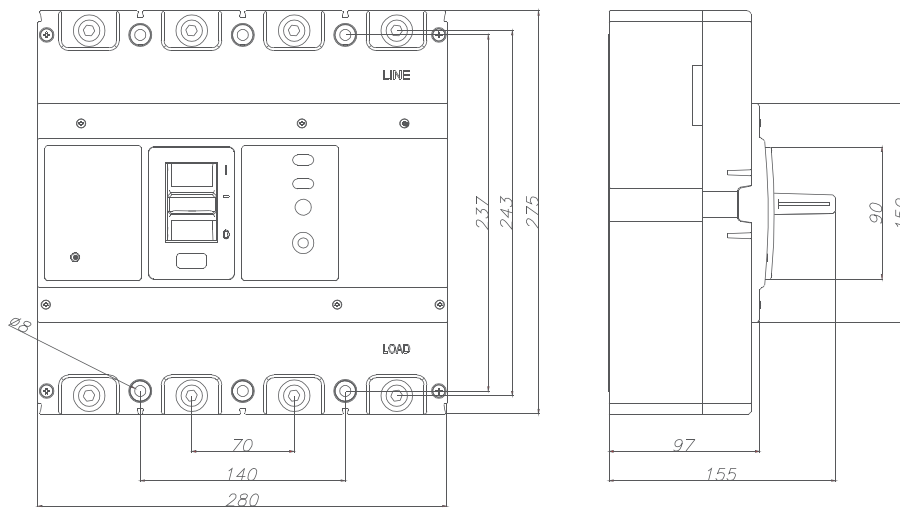


Outline Dimension

NEF6(800)



3P



4P



Ordering code

● NE ELCB

Item NO.	Frame	Rated current(A)	Rated leakage current(mA)	Product code	
				2 poles	3 poles
1	NE2-50	5	15	NE2-50/2-5-15	NE2-50/3-5-15
2		10		NE2-50/2-10-15	NE2-50/3-10-15
3		15		NE2-50/2-15-15	NE2-50/3-15-15
4		20		NE2-50/2-20-15	NE2-50/3-20-15
5		30		NE2-50/2-30-15	NE2-50/3-30-15
6		40		NE2-50/2-40-15	NE2-50/3-40-15
7		50		NE2-50/2-50-15	NE2-50/3-50-15
8	NE2-50	5	30	NE2-50/2-5-30	NE2-50/3-5-30
9		10		NE2-50/2-10-30	NE2-50/3-10-30
10		15		NE2-50/2-15-30	NE2-50/3-15-30
11		20		NE2-50/2-20-30	NE2-50/3-20-30
12		30		NE2-50/2-30-30	NE2-50/3-30-30
13		40		NE2-50/2-40-30	NE2-50/3-40-30
14		50		NE2-50/2-50-30	NE2-50/3-50-30

Item NO.	Frame	Rated current(A)	Product code(S type)			Product code(H type)		
			2 poles	3 poles	4 poles	2 poles	3 poles	4 poles
1	NEF1 (63A)	15	NEF1-S2/15	NEF1-S3/15	NEF1-S4/15	NEF1-H2/15	NEF1-H3/15	NEF1-H4/15
2		20	NEF1-S2/20	NEF1-S3/20	NEF1-S4/20	NEF1-H2/20	NEF1-H3/20	NEF1-H4/20
3		30	NEF1-S2/30	NEF1-S3/30	NEF1-S4/30	NEF1-H2/30	NEF1-H3/30	NEF1-H4/30
4		40	NEF1-S2/40	NEF1-S3/40	NEF1-S4/40	NEF1-H2/40	NEF1-H3/40	NEF1-H4/40
5		50	NEF1-S2/50	NEF1-S3/50	NEF1-S4/50	NEF1-H2/50	NEF1-H3/50	NEF1-H4/50
6		63	NEF1-S2/63	NEF1-S3/63	NEF1-S4/63	NEF1-H2/63	NEF1-H3/63	NEF1-H4/63
7	NEF2 (125A)	15	NEF2-S2/15	NEF2-S3/15	NEF2-S4/15	NEF2-H2/15	NEF2-H3/15	NEF2-H4/15
8		20	NEF2-S2/20	NEF2-S3/20	NEF2-S4/20	NEF2-H2/20	NEF2-H3/20	NEF2-H4/20
9		30	NEF2-S2/30	NEF2-S3/30	NEF2-S4/30	NEF2-H2/30	NEF2-H3/30	NEF2-H4/30
10		40	NEF2-S2/40	NEF2-S3/40	NEF2-S4/40	NEF2-H2/40	NEF2-H3/40	NEF2-H4/40
11		50	NEF2-S2/50	NEF2-S3/50	NEF2-S4/50	NEF2-H2/50	NEF2-H3/50	NEF2-H4/50
12		60	NEF2-S2/60	NEF2-S3/60	NEF2-S4/60	NEF2-H2/60	NEF2-H3/60	NEF2-H4/60
13		75	NEF2-S2/75	NEF2-S3/75	NEF2-S4/75	NEF2-H2/75	NEF2-H3/75	NEF2-H4/75
14		80	NEF2-S2/80	NEF2-S3/80	NEF2-S4/80	NEF2-H2/80	NEF2-H3/80	NEF2-H4/80
15		100	NEF2-S2/100	NEF2-S3/100	NEF2-S4/100	NEF2-H2/100	NEF2-H3/100	NEF2-H4/100
16		125	NEF2-S2/125	NEF2-S3/125	NEF2-S4/125	NEF2-H2/125	NEF2-H3/125	NEF2-H4/125
17	NEF3 (160A)	15	-	NEF3-S3/15	NEF3-S4/15	-	NEF3-H3/15	NEF3-H4/15
18		20	-	NEF3-S3/20	NEF3-S4/20	-	NEF3-H3/20	NEF3-H4/20
19		30	-	NEF3-S3/30	NEF3-S4/30	-	NEF3-H3/30	NEF3-H4/30
20		40	-	NEF3-S3/40	NEF3-S4/40	-	NEF3-H3/40	NEF3-H4/40
21		50	-	NEF3-S3/50	NEF3-S4/50	-	NEF3-H3/50	NEF3-H4/50
22		60	-	NEF3-S3/60	NEF3-S4/60	-	NEF3-H3/60	NEF3-H4/60
23		80	-	NEF3-S3/80	NEF3-S4/80	-	NEF3-H3/80	NEF3-H4/80
24		100	-	NEF3-S3/100	NEF3-S4/100	-	NEF3-H3/100	NEF3-H4/100
25		125	-	NEF3-S3/125	NEF3-S4/125	-	NEF3-H3/125	NEF3-H4/125
26		140	-	NEF3-S3/140	NEF3-S4/140	-	NEF3-H3/140	NEF3-H4/140
27	160	-	NEF3-S3/160	NEF3-S4/160	-	NEF3-H3/160	NEF3-H4/160	
28	NEF4 (250A)	100	-	NEF4-S3/100	NEF4-S4/100	-	NEF4-H3/100	NEF4-H4/100
29		125	-	NEF4-S3/125	NEF4-S4/125	-	NEF4-H3/125	NEF4-H4/125
30		160	-	NEF4-S3/160	NEF4-S4/160	-	NEF4-H3/160	NEF4-H4/160
31		180	-	NEF4-S3/180	NEF4-S4/180	-	NEF4-H3/180	NEF4-H4/180
32		200	-	NEF4-S3/200	NEF4-S4/200	-	NEF4-H3/200	NEF4-H4/200
33		225	-	NEF4-S3/225	NEF4-S4/225	-	NEF4-H3/225	NEF4-H4/225
34		250	-	NEF4-S3/250	NEF4-S4/250	-	NEF4-H3/250	NEF4-H4/250
35	NEF5 (400A)	250	-	NEF5-S3/250	NEF5-S4/250	-	NEF5-H3/250	NEF5-H4/250
36		315	-	NEF5-S3/315	NEF5-S4/315	-	NEF5-H3/315	NEF5-H4/315
37		350	-	NEF5-S3/350	NEF5-S4/350	-	NEF5-H3/350	NEF5-H4/350
38		400	-	NEF5-S3/400	NEF5-S4/400	-	NEF5-H3/400	NEF5-H4/400
39	NEF6 (800A)	500	-	NEF5-S3/500	NEF5-S4/500	-	NEF5-H3/500	NEF5-H4/500
40		630	-	NEF5-S3/630	NEF5-S4/630	-	NEF5-H3/630	NEF5-H4/630
41		700	-	NEF5-S3/700	NEF5-S4/700	-	NEF5-H3/700	NEF5-H4/700
42		800	-	NEF5-S3/800	NEF5-S4/800	-	NEF5-H3/800	NEF5-H4/800

Remark: 1. According to the rated current ,it has Fix type and Adjustable type(0.8In~1.0In);
 2. According to trip action time, it has Fix type and Adjustable type(0.1s/0.3s/0.5s or 0.45s/1.0s/2.0s);
 3. According to the rated residual current, it has Fix type and Adjustable type(30mA/100mA/300mA/500mA);



Built-in Accessories

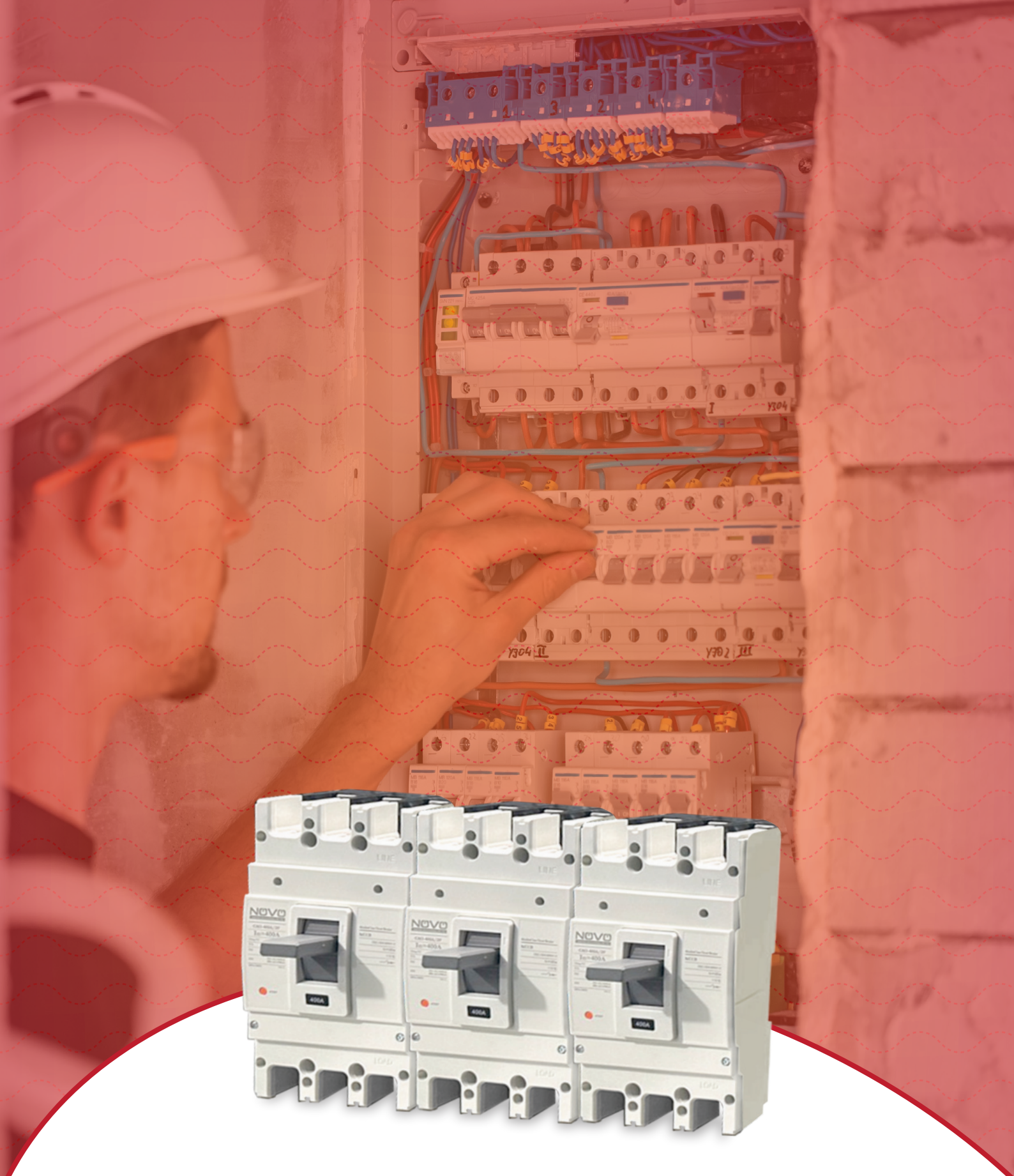


Product code	Specification
SHT	Shunt Trip
AX	Auxiliary Switch
AL	Alarm Switch
AX+AX	Combination switch:Two Auxiliary Switch in one body
AX+AL	Combination switch:One Auxiliary Switch and one Alarm Switch in one body

Built-out Accessories



Product code	Specification
STC 12	Short Terminal Cover 12 ,F1(63A) 2P
STC 13	Short Terminal Cover 13 ,F1(63A) 3P
STC 21	Short Terminal Cover 21 ,F2(125A) 1P
STC 22	Short Terminal Cover 22 ,F2(125A) 2P
STC 23	Short Terminal Cover 23 ,F2(125A) 3P
STC 24	Short Terminal Cover 24 ,F2(125A) 4P
STC 43	Short Terminal Cover 43 ,F4(250A) 3P
STC 44	Short Terminal Cover 44 ,F4(250A) 4P
IB 01	Inter-phase Insulation Barrier 01 for F1(63A),F2(125A)
IB 02	Inter-phase Insulation Barrier 02 for F4(250A)
IB 03	Inter-phase Insulation Barrier 03 for F5(400A)
IB 04	Inter-phase Insulation Barrier 04 for F6(800A)
CCB 01	Copper Connection Bar 01 for F2(125A)
CCB 02	Copper Connection Bar 02 for F4(250A)
CCB 03	Copper Connection Bar 03 for F5(400A)
CCB 04	Copper Connection Bar 04 for F6(800A)



NOVO

Electric technology UK Ltd

Email: info@ests.uk | Website: www.ests.uk | Mob: +44 7441 365495
Address: 71-75 Shelton Street Covent Garden, London, WC2H 9JQ, United Kingdom